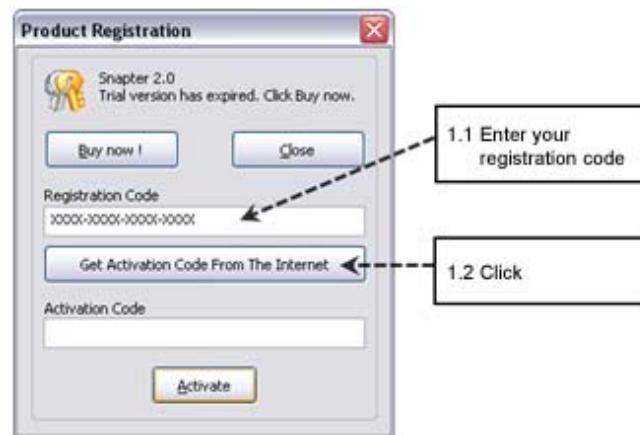


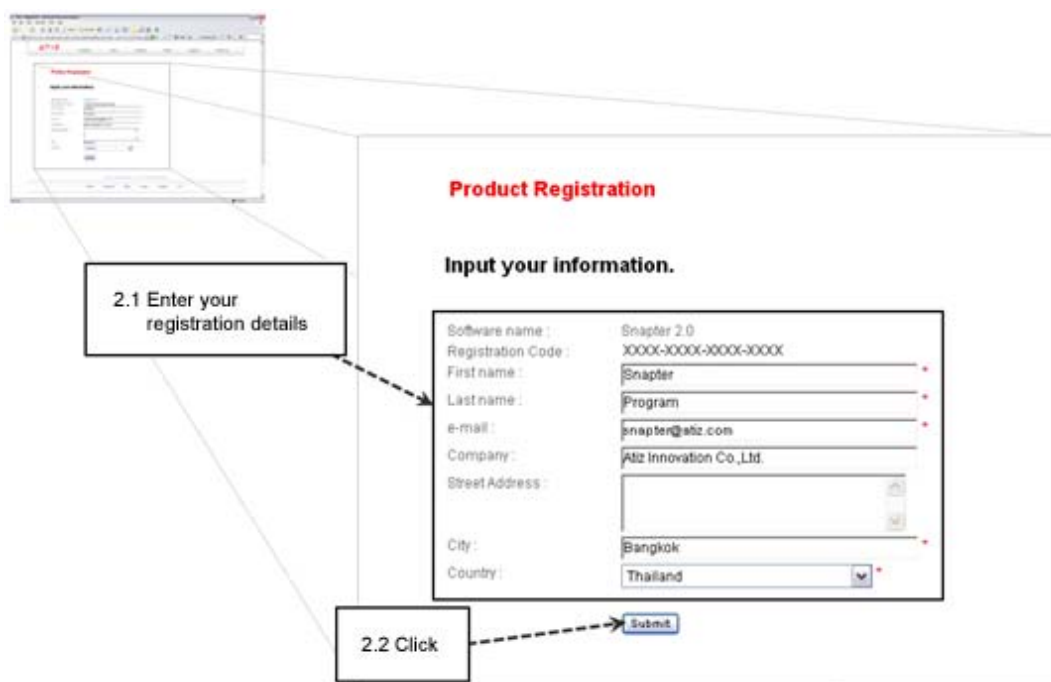
Getting Started: Snapter Software

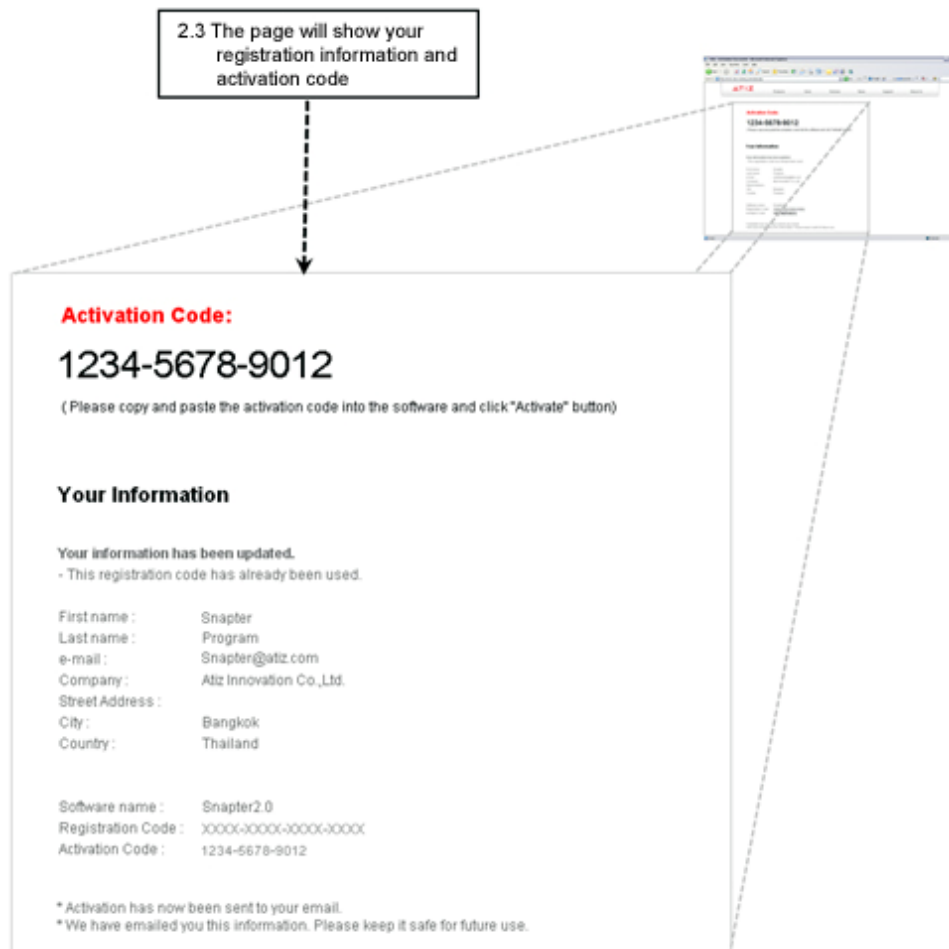
➤ Product Registration

1. On start-up, if your product has not been registered, a 'Product Registration' dialog will appear. Enter your registration code in the text-box as shown then click 'Get Activate Code From The Internet'.

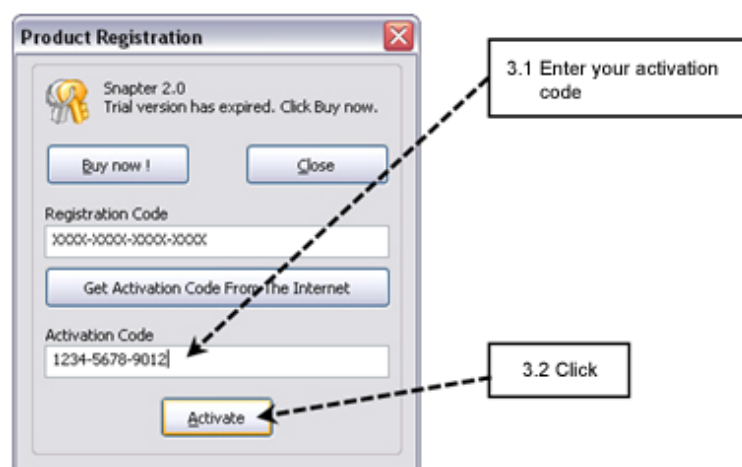


2. You will be forwarded to the product registration webpage. Enter your registration details then click 'Submit'.





3. Once your product is successfully registered you will receive an activation code. Enter your activation code in the 'Product Registration' dialog then click 'Activate'.

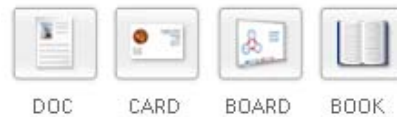


➤ Using Snapter

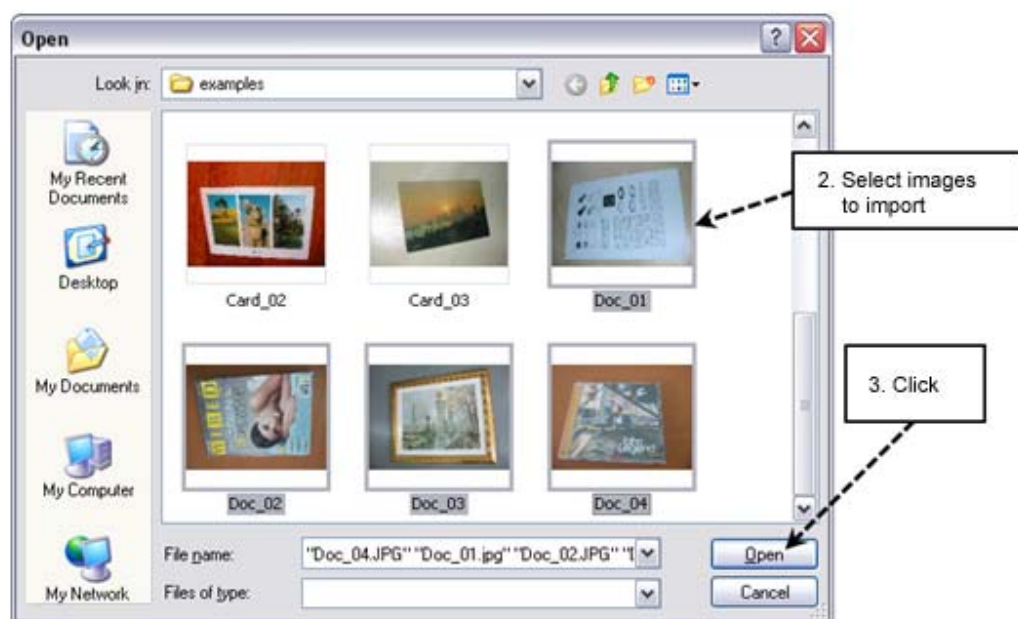
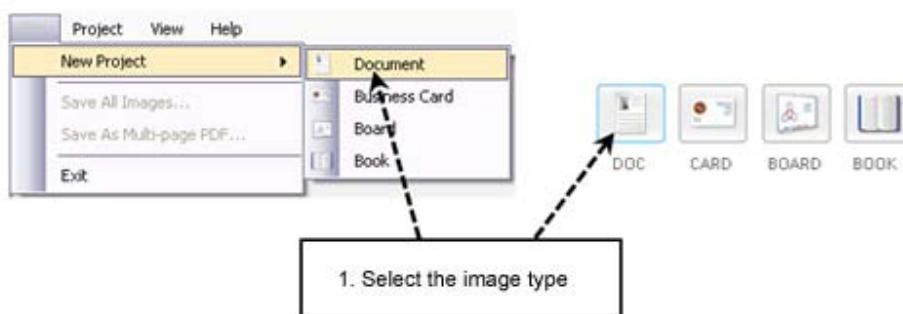
How to load an image

Firstly you must choose from one of the 4 pre-defined image types listed below.

- Document
- Business Card
- White Board
- Book



To Import Your image, From the 'File' menu select 'New Project' then select the image type you want to create. Alternatively, select the image type by clicking on the icon as shown. Browse for your image then click 'Open'.



The Input Setting

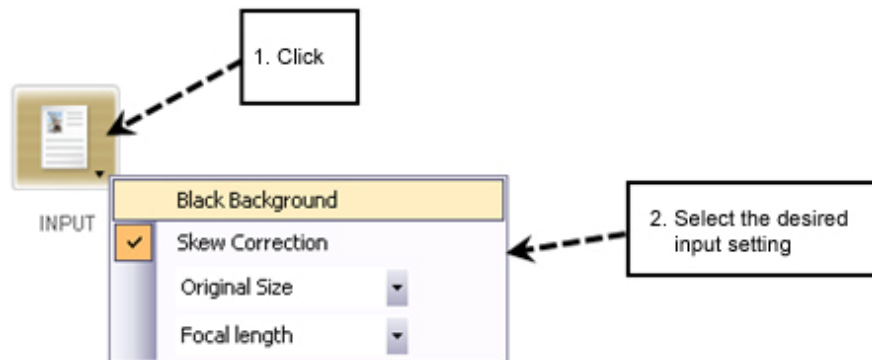
-There are 4 input settings as follows:

- **Black Background** - for images that have a black or single-color background.
- **Skew Correction** - for images that have a wood-textured background.
- **Original Size** - to set the output image to its original size. For example: the size of an A4

document image will be set to A4.

● **Focal length** (This option will correct images with page curvature.) ใช้สำหรับปรับภาพที่บวม หรือ
นูนให้ปกติ

-Right click on the 'INPUT' icon then select the desired input settings from the context menu.



note: Snapter will automatically detect and select 'Black Background' and 'Skew Correction' input settings.

THE OUTPUT SETTING

-The settings for the output image are as follows.

1. **Crop Pages** - This setting is for cropping documents, business cards, etc.
2. **Split Page** - This setting will split one image in to 2 pages, eg. the left and right pages of a book.
3. **Photometric Enhancement** - This setting will adjust the color of the output image.
 - 3.1) **No Enhancement** - The output color will be the same as the original color.
 - 3.2) **Automatic Color Enhancement**
 - 3.3) **Grayscale**
 - 3.4) **Black and White**



4. Contrast Enhancement

5. Sharpening Enhancement

6. **Quality** - This setting will adjust the quality of the output image. Choose from one of the following;

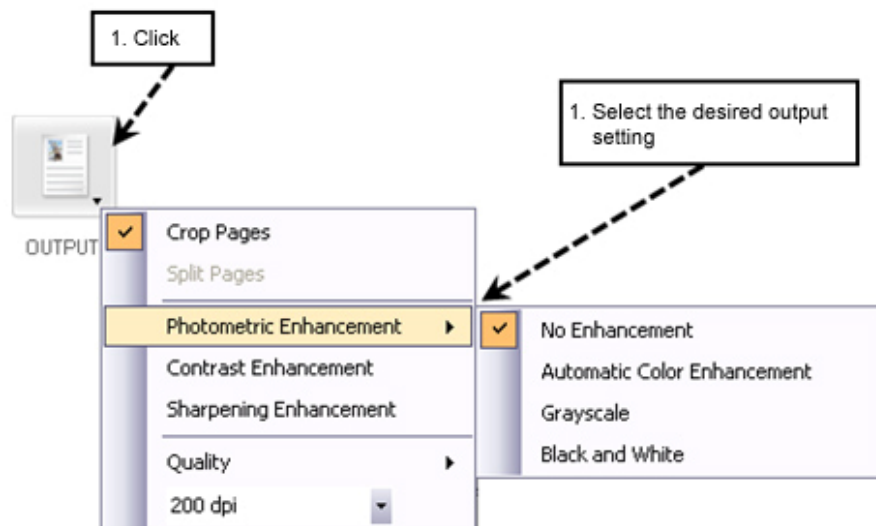
6.1) Standard

6.2) Better Quality (tack longer time)

6.3) Best Quality (tack longer time)

6.4) 200 dpi

-Right click on the '*OUTPUT*' icon and select the desired output settings from the context menu.



Before Processing The Input Image

1. Check that you have the correct input image.

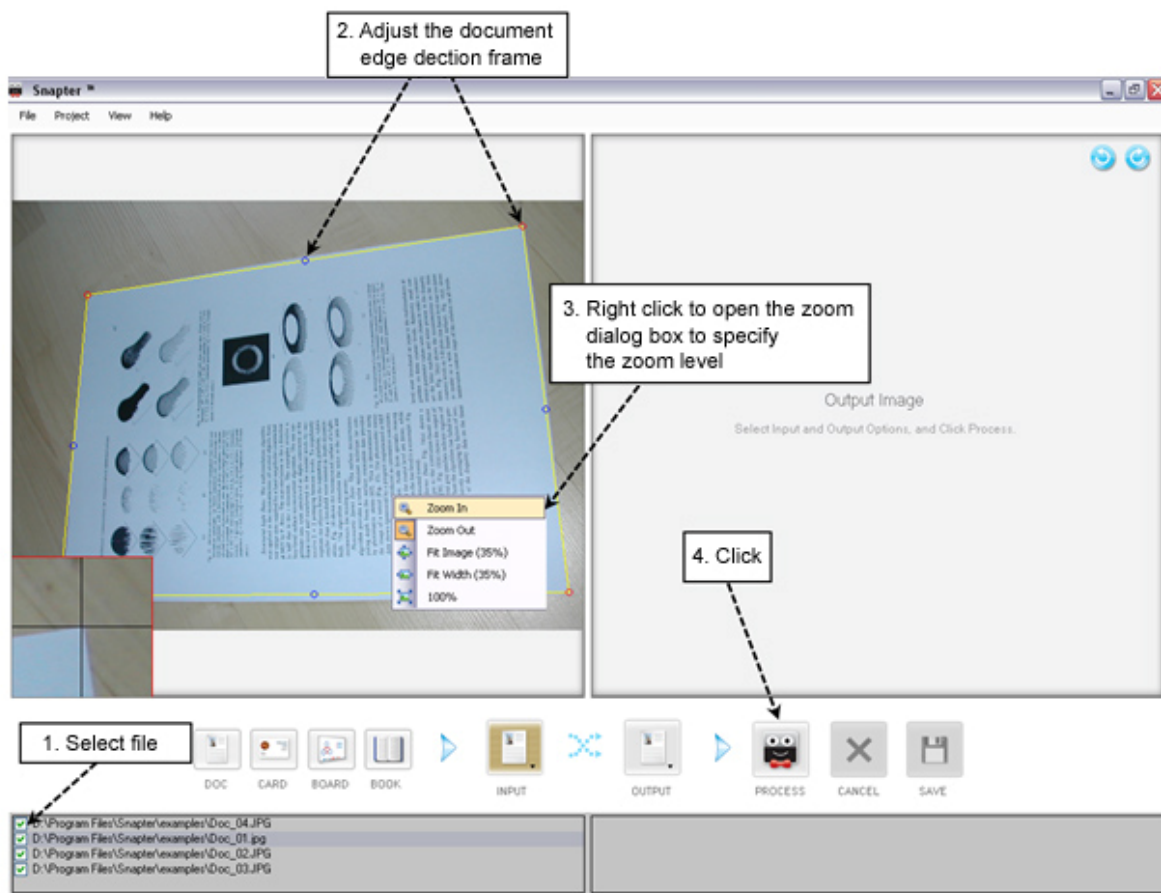
2. Check for correct document edge detection. Adjust the yellow frame by clicking on the blue and red markers and dragging.

3. Check that you have selected the correct input settings.

4. Check that you have selected the correct output settings.

Finally, click '*PROCESS*' to begin processing.





note: Input image filenames are listed in the bottom left panel as shown above. To select an input image, click on the image filename.

How to save the output:

-You can either select 'Save' from the 'File' menu or click the 'SAVE' icon.

- **Save All Images...** - To save all output images as separate files.
- **Save As Multi-page PDF** – To save all output images into a single multi-page PDF file.

