

4

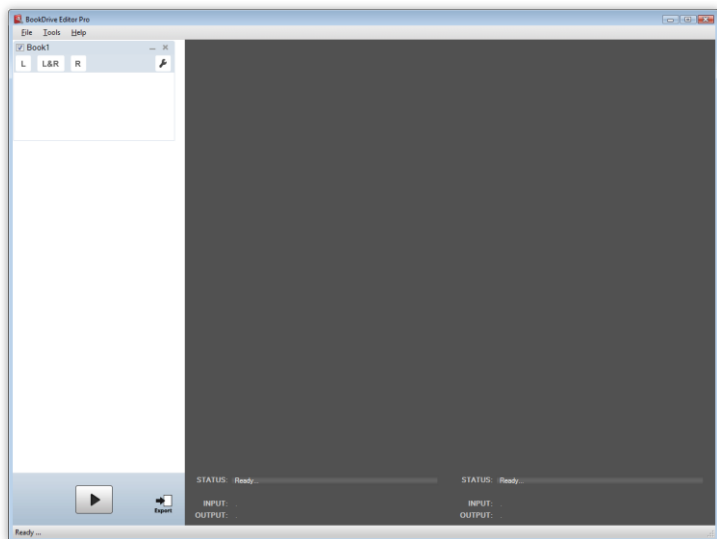
Edit.

www.atiz.com/support/diy

How to edit the images

You can use BookDrive Editor Pro to further enhance the scanned images to your satisfaction.

Step 1 After you've finished scanning the book. Close BookDrive Capture and launch BookDrive Editor Pro

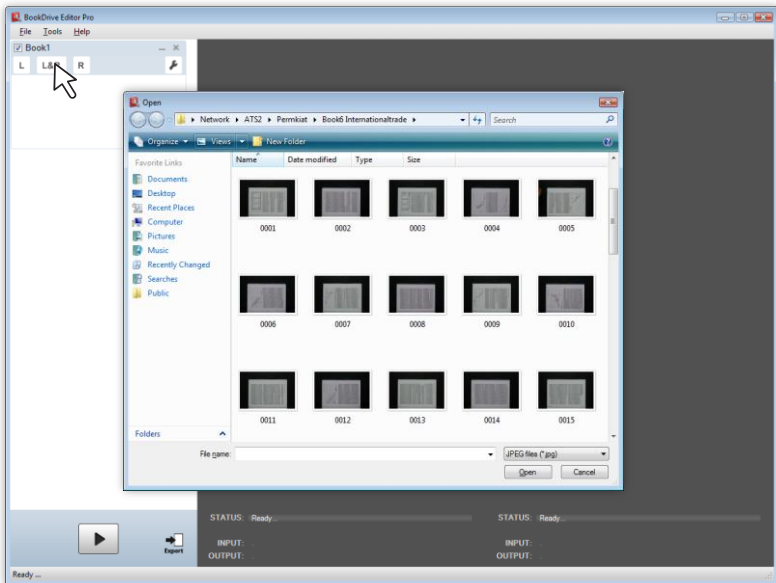


This is the interface of BookDrive Editor Pro. The left column shows thumbnails of the files to be edited. The right column shows preview of output images as they are being processed.

Step 2 To start, you need to select the files to edit.

Click **"New Book"** and **"L&R"**

The **"L&R"** button means that you want to add both the left- and right-hand pages.
(Click **"L"** or **"R"** if you want to add only the left-hand pages or the right-hand pages).



- To select many files, draw over the area of the files or hold **Ctrl** while selecting an image.
- To select all, press **Ctrl + A**.

Click **Open**. The program will add the selected images to the waiting list of files to be processed.

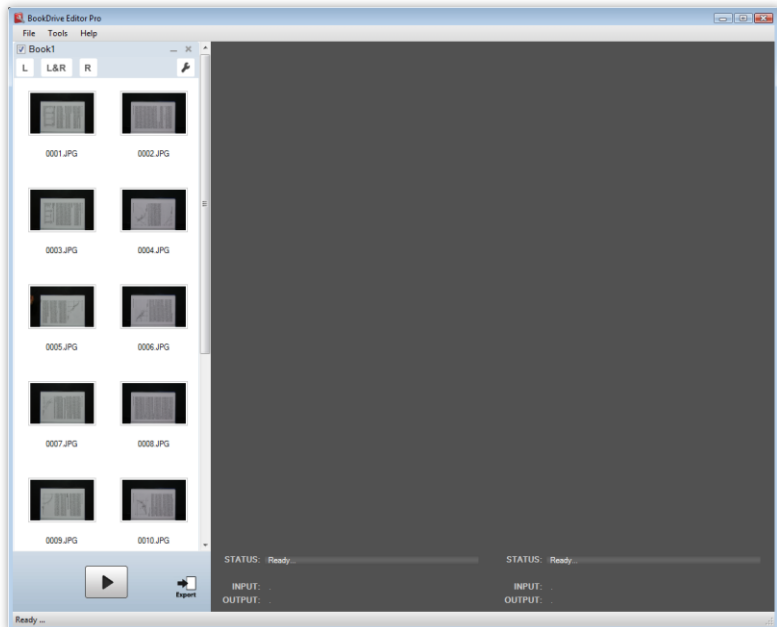
How images are sorted and put in an order?

The software will automatically sort the selected images based on their file names in an ascending order. The ones with lower values will be on top while the ones with higher values will be at the bottom.

For example:

If you select the "L&R" option, file 001.JPG will be on the top left, 002.JPG on the top right, 003.JPG second left, 004.JPG second right, and so on.

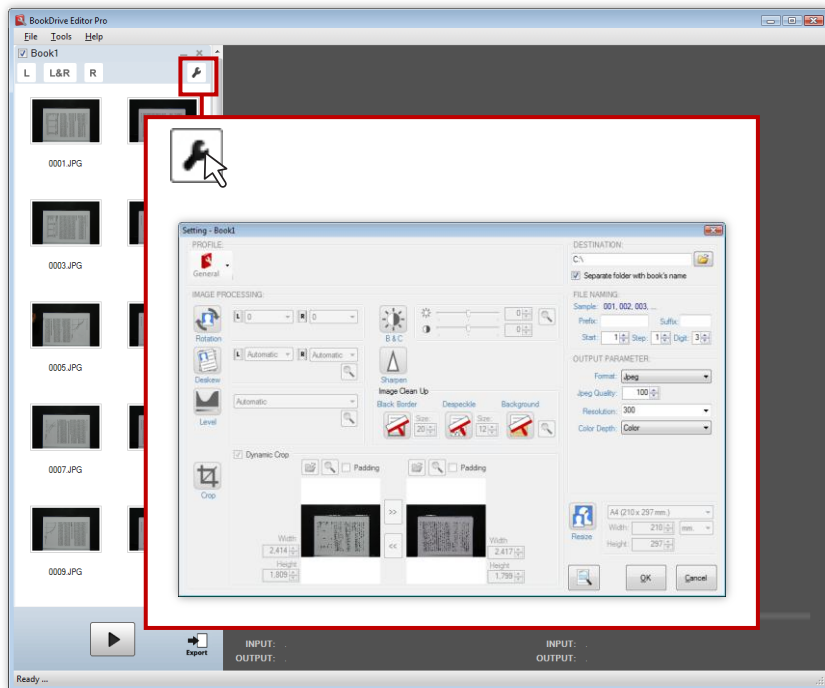
Step 3 The left column will display the file thumbnails.



Step 4 Click Settings button.

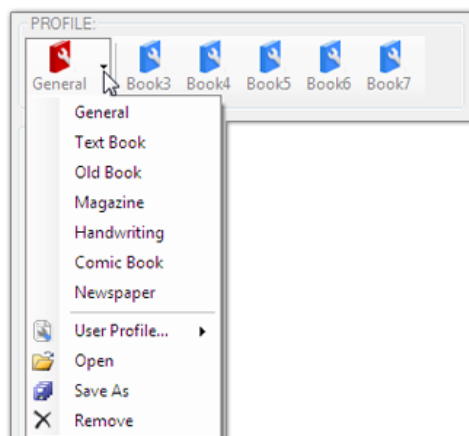


You will see the Setting window as shown here:



You don't have to make settings every time. You can save you these settings as a 'profile' for later use.

The program also comes with default profiles to help you get up and running faster. Red icons represent the profiles that come with the software. Blue icons represent the recent profiles that you used.



Step 6 Click on an image operation that you want to enable.
For example, this is what will appear if you enable the image rotation.



Image rotation is disabled.



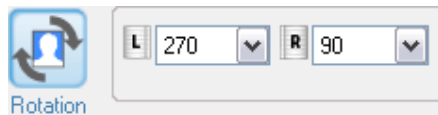
Image rotation is enabled.

Here are some of the available image operations:

Image rotation

You have options to rotate the image 0, 90, 180 or 270 degrees clockwise.

Normally, rotate the left-hand image by 270 degrees and the right-hand image by 90 degrees.



What does Auto Level do?



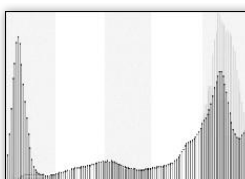
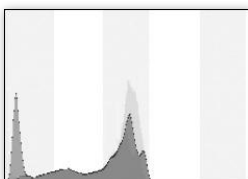
Auto Level

This image operation makes black blacker and white whiter.

Before



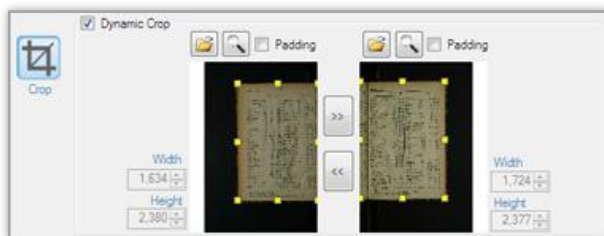
After





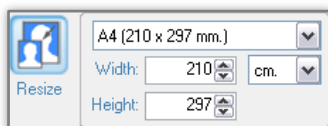
Crop

Get rid of the unwanted area of the image.

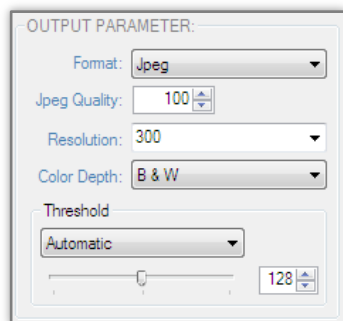


Resize

Images can be resized to any standard size or custom size

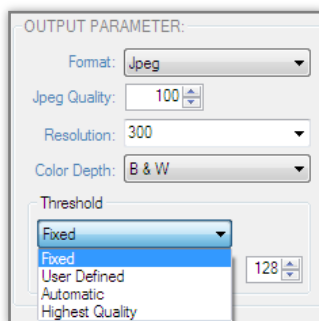
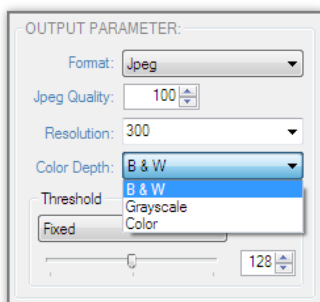


Output file selection



- The available output format options are TIFF or JPEG.
- Available compressions for TIFF are LZW, CCITT G3, CCITT G4
- Users can also select the level of compression for JPEG format by setting its quality level.
- Resolution is where you can set DPI of the output image. You can select 100, 200, 300, 600 DPI or specify the exact desired DPI.
- Available color options are: Black and White, Grayscale and Color.
- As for Black and White conversion, there are many types of conversions allowed. This has to do with the threshold of how a given pixel is converted to either a black or white pixel.
 - Fixed (threshold value is set at 128)
 - User defined (users can define other threshold values)
 - Automatic (the level of optimal threshold will automatically be selected by the computer).
 - Highest Quality (this setting can be known as dynamic localized thresholding, which means there can be many thresholding values on a page. If selected, the program will scan the entire page and automatically adjust the thresholding values for optimal values throughout the pages. This setting will take the longest time but will provide the best quality.)

Black & white conversion



Examples of results using different thresholding techniques:



Fixed threshold

Use middle value (128) as threshold to turn a pixel into black or white. Use this mode if the captured image is well lighted.



Custom threshold

You can define your own threshold value.

- Set threshold value lower than 128 if your scanned image is dark.
- Set threshold value higher than 128 if your scanned image is too bright.



Optimal threshold

Let the program pick the threshold value that works best across the entire image.

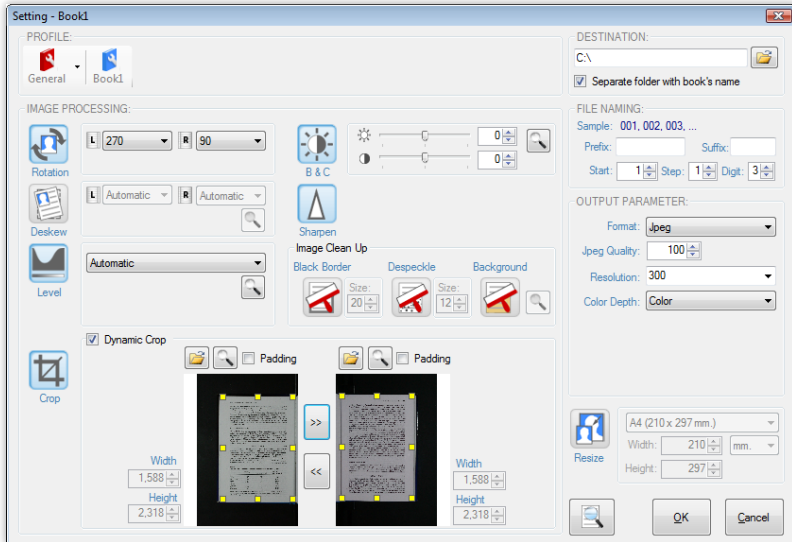


Dynamic Localized threshold

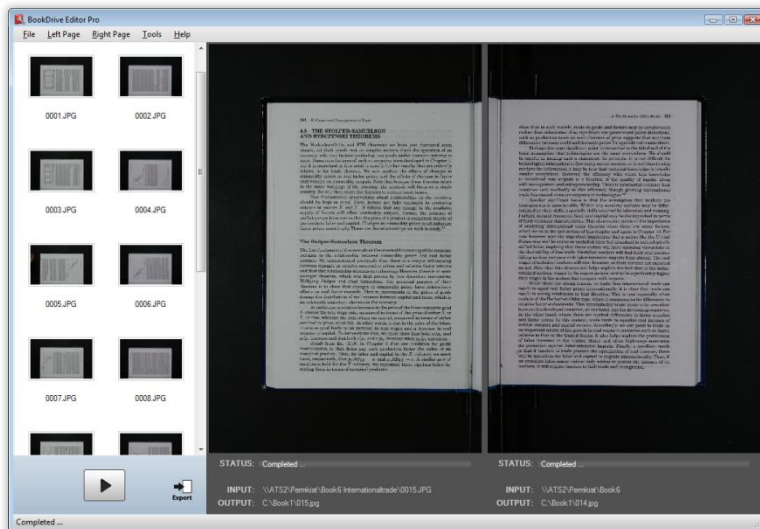
In this mode, the program will analyze the entire image area by area and pick various threshold values that works best in their respective areas. This technique will retain most details.

Before running the actual operations, you can see the preview of the outcome you will get by

clicking Preview button

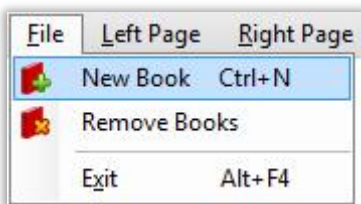


If you're not satisfied with the result in the preview, go back to make change to the settings until you get satisfactory result.



You can add another chapter or even a completely different book to the queue.

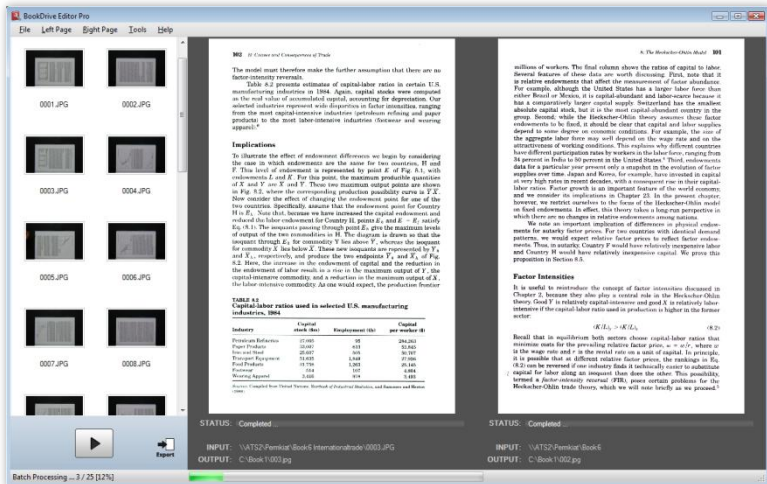
Press New book again and repeat the steps for the settings.





Run batch

Once all the settings have been made, it's time to run the batch image processing operations. Simply hit the Run Batch button.



If you want to stop, click the same button again.

Finished Steps You will get the satisfied pictures.

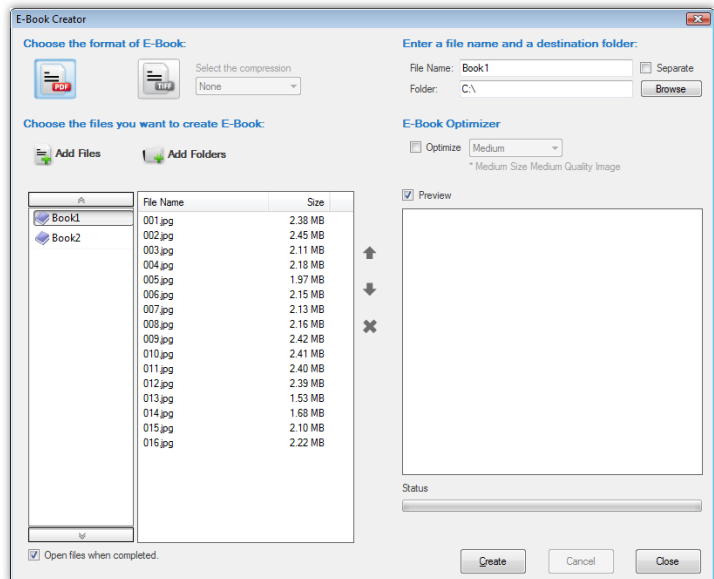


Export

Creating PDFs

You can export results into PDFs or multi-page TIFF by clicking the Export button.

Once clicked, you will see this window.



Steps

1. Click **Export** button.
2. Select the images you want to export.
3. Select the output format (PDF or TIFF)
4. Click **Create**.

