

3. How to edit images

www.atiz.com/support

How to edit the images

Topics

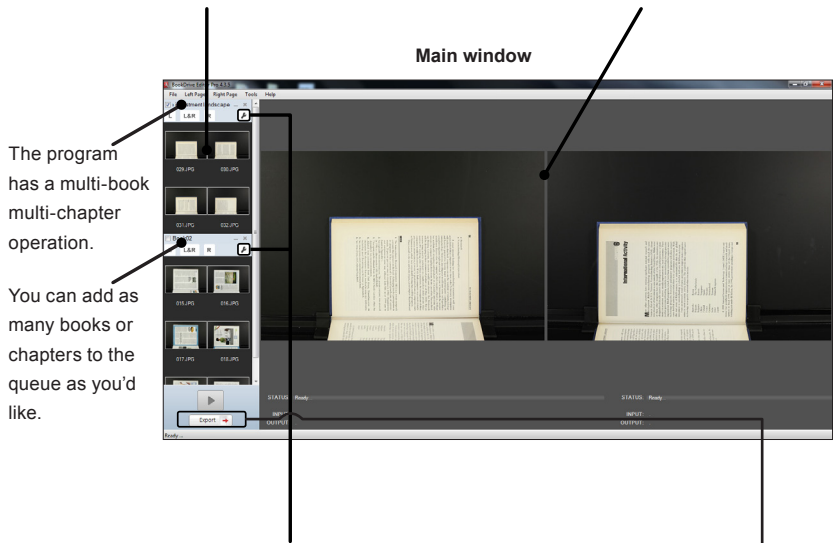
1. Basics of BookDrive Editor Pro
2. Begin editing
3. Explaining the Setting window
4. What each image operation does?
5. Creating PDF

Basics of BookDrive Editor Pro

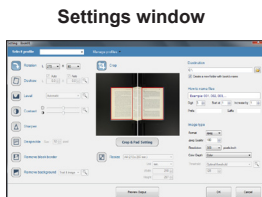
BookDrive Editor Pro is for post-processing to further enhance the scanned images to your satisfaction and to output the images as PDF or TIFF for distribution and, or archiving.

Thumbnails of the files to be edited.

Preview of output images as they are being processed.

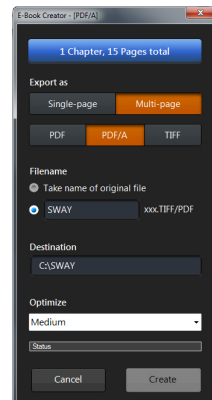


each chapter book/each chapter its own settings.



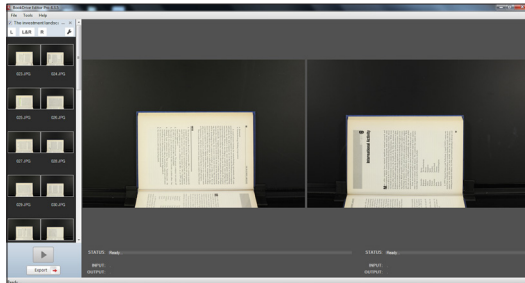
Click this if you want to output to other formats such as PDF/A.

Export window



Begin editing

1. After you've finished scanning, close BookDrive Capture and launch BookDrive Editor Pro.



2. Begin with the first chapter of the book.
Click **File / New Book**

Click button.

- The button means you want to add both left and right pages.
- Click or if you want to add only the left or right pages

- To select many files.
- To select all, press **Ctrl+A**

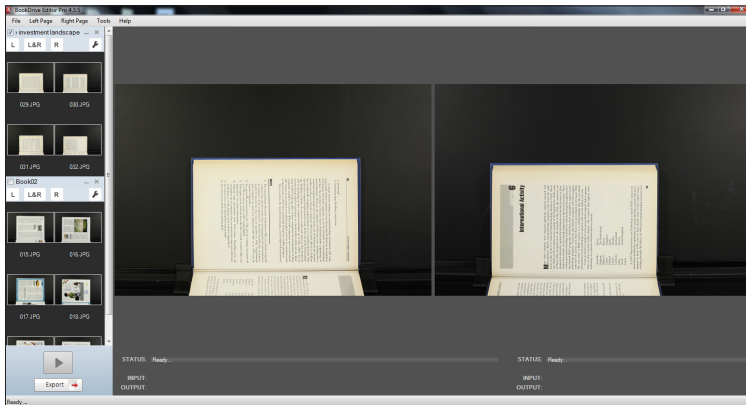
Click **Open** The file will add the selected images to the queue.

How images are sorted and put in an order?

The software will automatically sort the selected images based on their file names in an ascending order. The ones with lower values will be on top while the ones with higher values will be at the bottom.


For example:

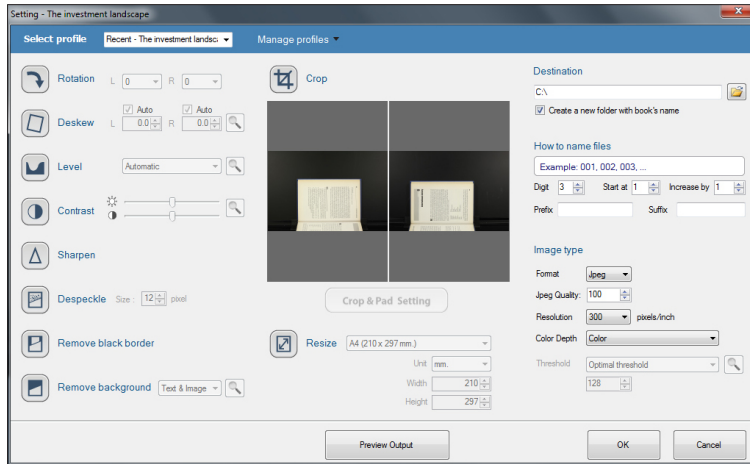
If you select the “L&R” option, file 001.JPG will be on the top left, 002.JPG on the top right, 003.JPG second left, 004.JPG second right, and so on.



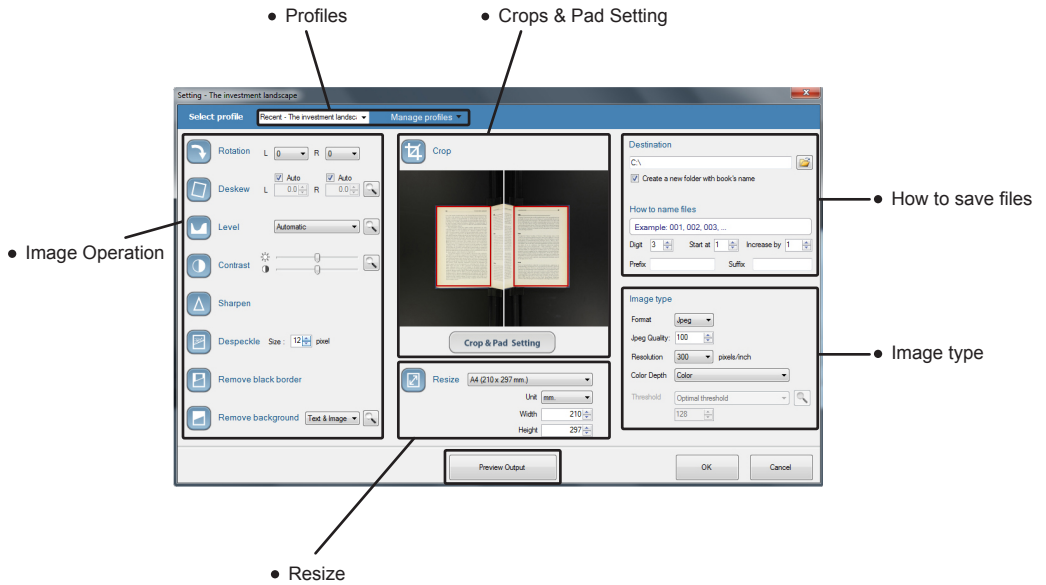
The files are now added to the queue.
(You can add as many chapters and books to the queue as you'd like by following the same steps.)

3. Each chapter needs its own settings.

Click Settings button. 



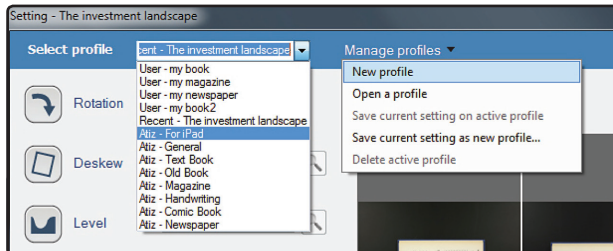
Explaining the setting window



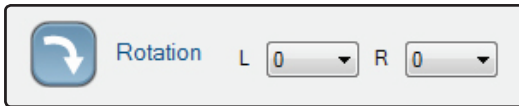
Click this to see the final output

• Profiles

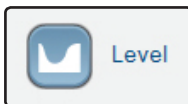
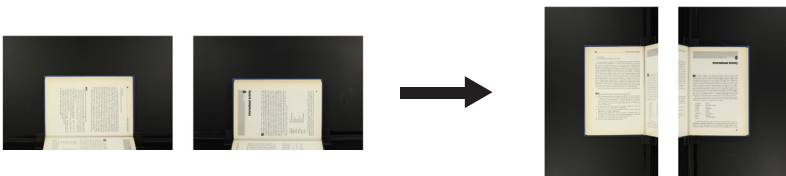
Profiles is a file that contain setting ...
The program comes with various default profiles to help you get started.



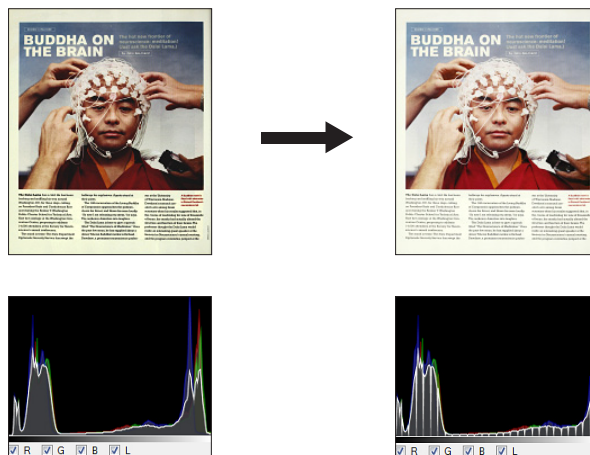
What each image operation does?

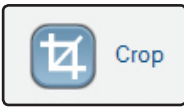


The operation rotates images clockwise either 0, 90, 180 or 270 degrees. Normally, if your input images look like the images below you would want to rotate the left image by 270 degrees and the right image by 90 degrees.



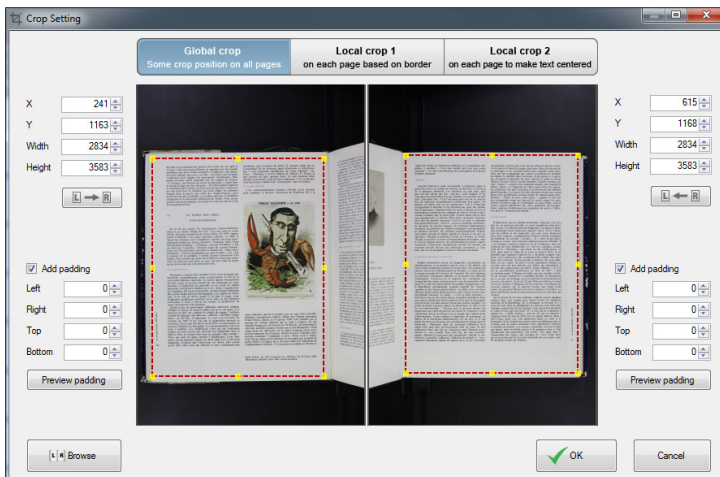
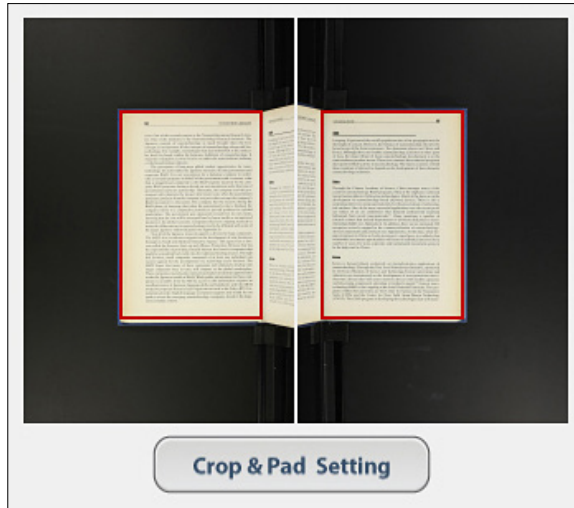
Auto Level makes black blacker and white whiter.

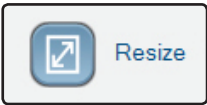




Crop

Get rid of the unwanted area of the image.





Resize

Images can be resized to any standard size or custom size.

Resize

Unit

Width

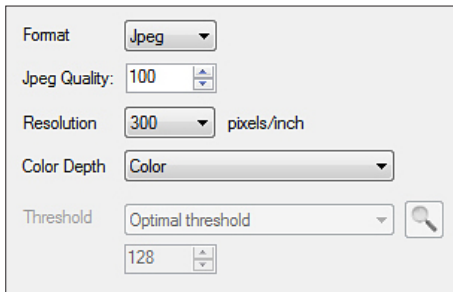
Height



A5

A4

Output file selection



Format: Jpeg

Jpeg Quality: 100

Resolution: 300 pixels/inch

Color Depth: Color

Threshold: Optimal threshold

128

- The available output format options are TIFF or JPEG.
- Available compressions for TIFF are LZW, CCITT G3, CCITT G4
- Users can also select the level of compression for JPEG format by setting its quality level.
- Resolution is where you can set DPI of the output image. You can select 100, 200, 300, 600 DPI or specify the exact desired DPI.
- Available color options are: Black and White, Grayscale and Color.
- As for Black and White conversion, there are many types of conversions allowed. This has to do with the threshold of how a given a pixel is converted to either a black or white pixel.
 - Fixed (threshold value is set at 128)
 - User defined (users can define other threshold values)
 - Automatic (the level of optimal threshold will automatically be selected by the computer).
 - Highest Quality (this setting can be known as dynamic localized thresholding, which means there can be many thresholding values on a page. If selected, the program will scan the entire page and automatically adjust the thresholding values for optimal values throughout the pages. This setting will take the longest time but will provide the best quality.)

Black & white conversion

Format:

Jpeg Quality:

Resolution: pixels/inch

Color Depth:
Black & White
Grayscale
Color

Threshold:

Format:

Jpeg Quality:

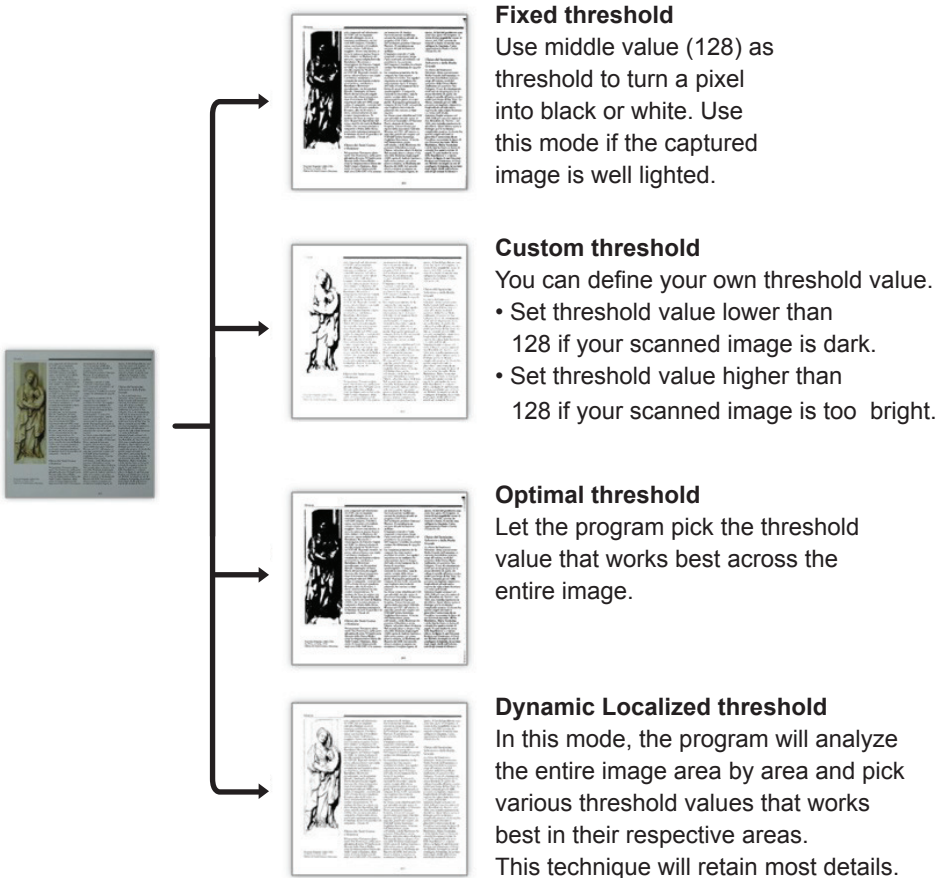
Resolution: pixels/inch

Color Depth:

Threshold:
Optimal threshold
Fixed threshold
Custom threshold
Optimal threshold
Dynamic localized threshold

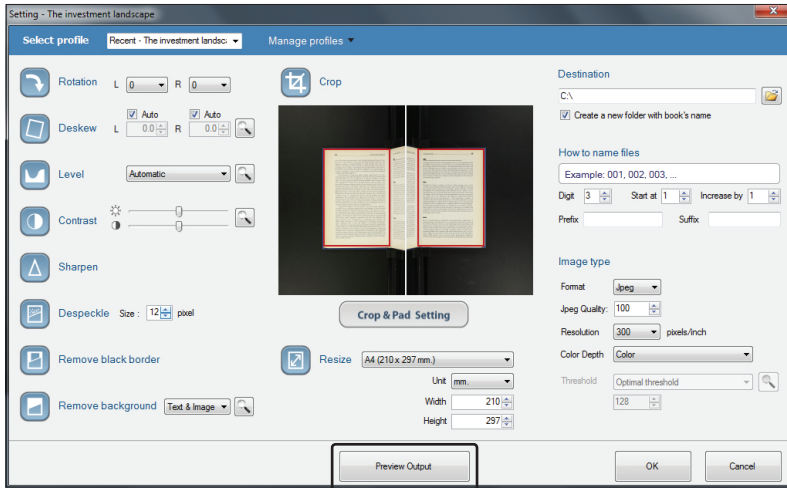


Examples of results using different thresholding techniques:



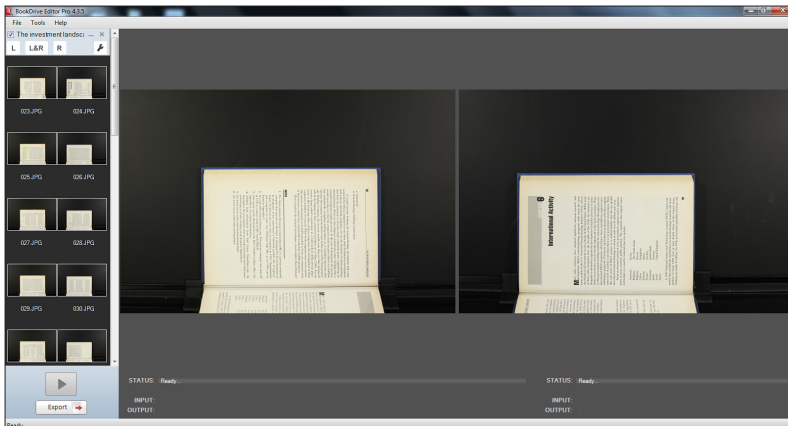
Preview Output

Before running the actual operations, you can see the preview of the outcome you will get by clicking **Preview Output** button.

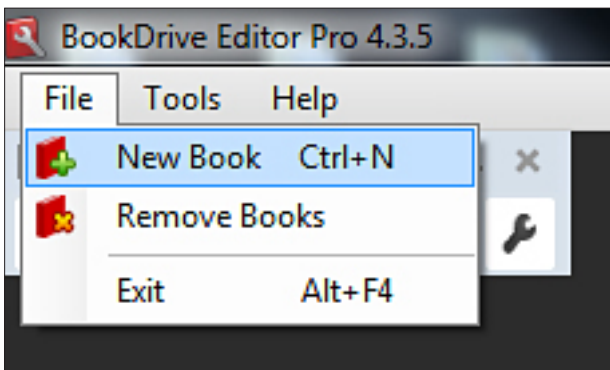


If you're not satisfied with the result in the preview, go back to make change to the settings until you get satisfactory result.

You can add another chapter or even a completely different book to the queue.



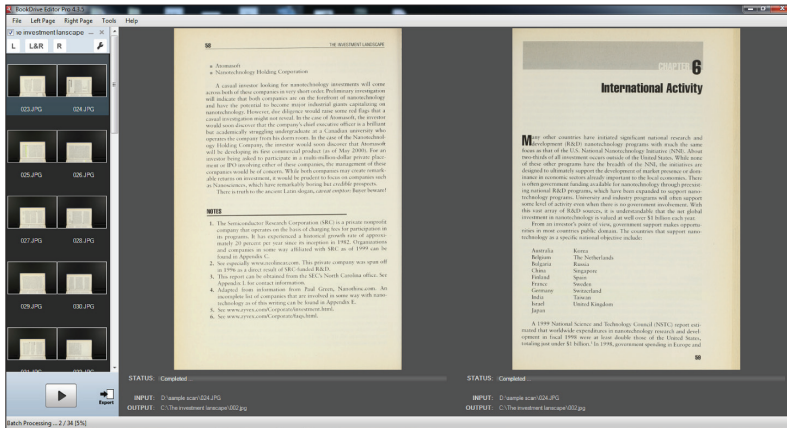
Press **New book** again and repeat the steps for the settings.





Run batch

Once all the settings have been made, it's time to run the batch image processing operations. Simply hit the Run Batch button.



If you want to stop, click the same button again.

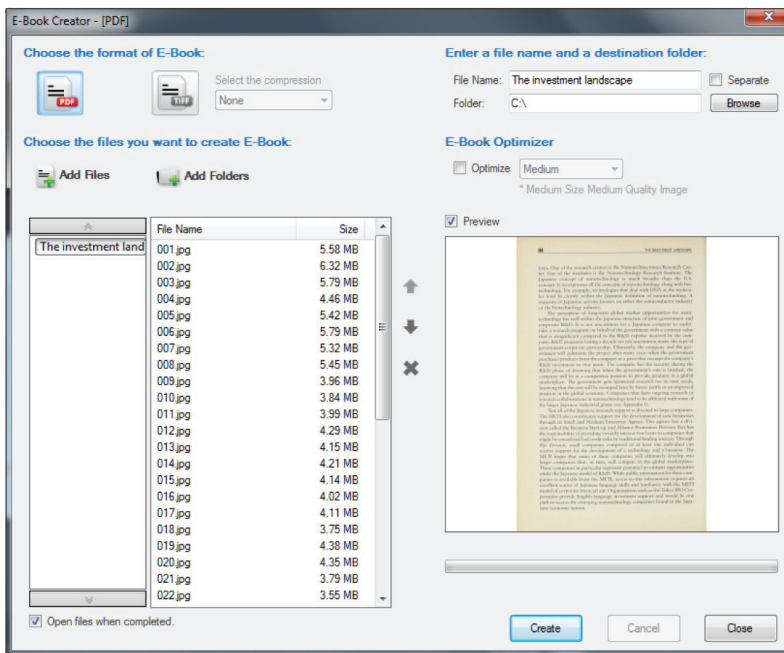
Finished Steps You will get the satisfied pictures.



Creating PDFs

You can export results into PDFs or multi-page TIFF by clicking the **Export** button.

Once clicked, you will see this window.



Steps

1. Click **Export** button.
2. Select the images you want to export.
3. Select the output format (PDF or TIFF).
4. Click **Create**.

www.atiz.com

©Copyright 2006-2011. Atiz Innovation Co.,Ltd. All rights reserved.