

2

Set up software.

www.atiz.com/support/pro

How to set up the software

BookDrive DIY comes with 2 applications.

1. BookDrive Capture – for controlling the cameras and capturing the images
2. BookDrive Editor Pro – for image processing and making e-books

Requirements

- BookDrive Capture from version 3 up works with both Windows XP and Windows Vista (32 bit system only).
- BookDrive Editor Pro from version 4 up works with both Windows XP and Vista (32 bit system only).
- CPU – Pentium 3 1 GHz or better
- RAM – Minimum 512MB (2GB is highly recommended).
- Interface – USB 2.0 Hi-speed
- Driver – drivers for Canon camera must have been installed
- Monitor – 1024 x 768 resolution or better.

BookDrive Capture 3 has two modes for operation: Single PC and Dual PC modes.

Single PC mode

The Single PC mode allows a sequential shooting (one camera shooting at a time), resulting in maximum capture speed of 500-700 pages an hour.

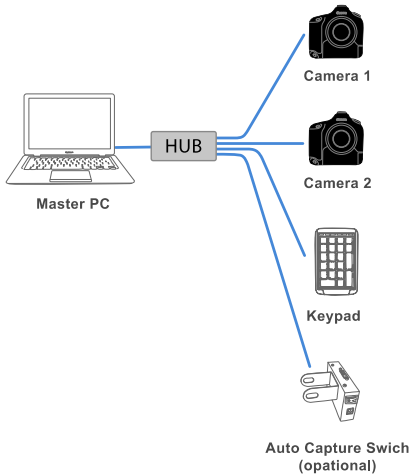
Dual PC mode

To make 2 cameras capture at the same time thus reducing waiting time, it requires 2 PCs, each connecting to one camera. Both PCs are connected together via a LAN network. This mode is recommended only for advanced users.

The following picture summarizes the key differences of Single PC mode VS. Dual PC Mode

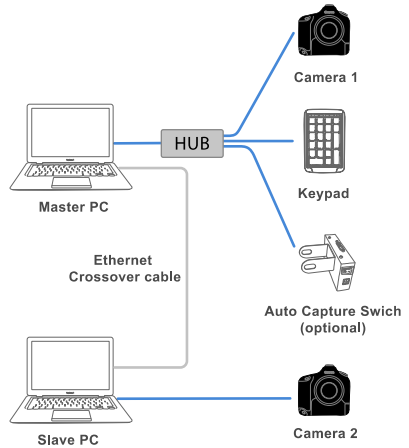
Single PC mode

- Windows XP only
- 1 PC, simple set-up
- Sequential shooting
(max speed \approx 500 pgs/hr.)
- Cannot change camera settings within the software



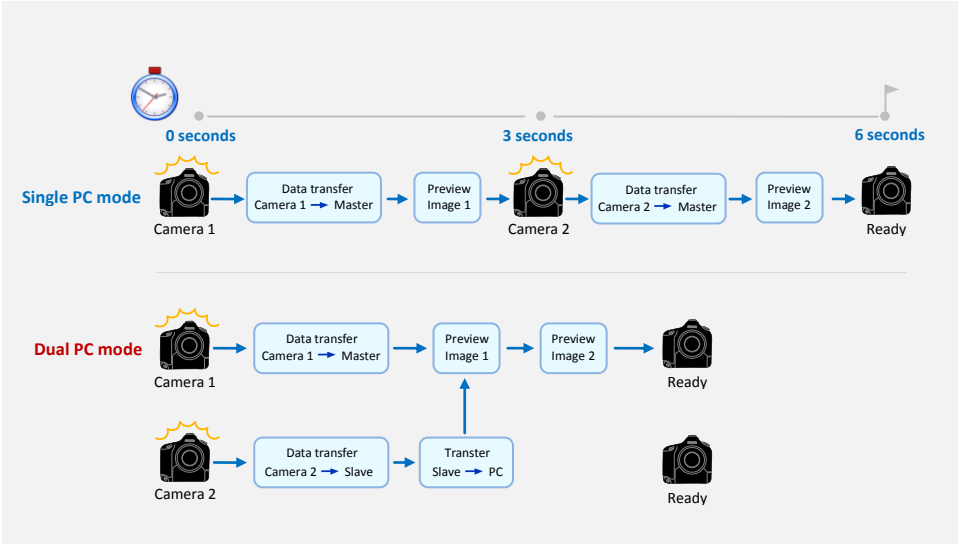
Dual PC mode

- Windows XP and Vista
- 2 PCs, more advanced set-up
- Simultaneous shooting
(max speed \approx 900 pgs/hr.)
- Can change camera settings within the software



V.S

Workflow comparison



Installing the Software

- Step 1** Make sure you've successfully installed Canon drivers and software that come with the cameras. Do not proceed to next step if you still can't do PC remote shooting using the Canon software.

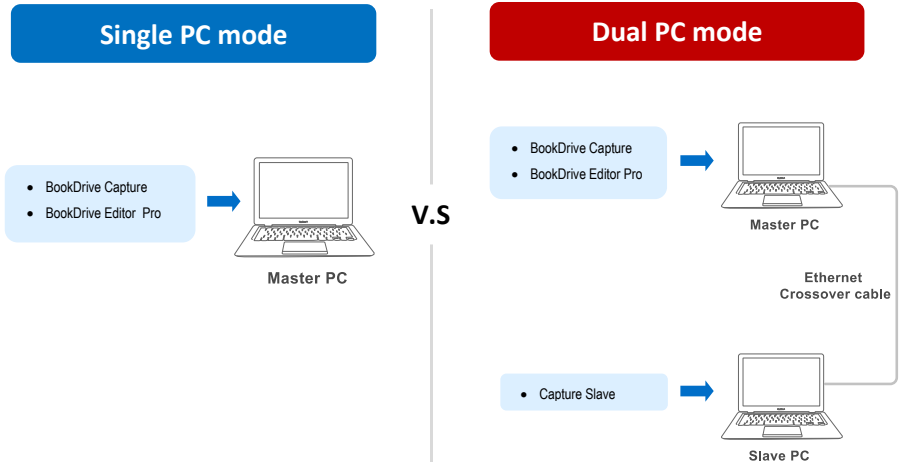


(The actual screenshot of Canon software may differ from what's shown here)

Step 2

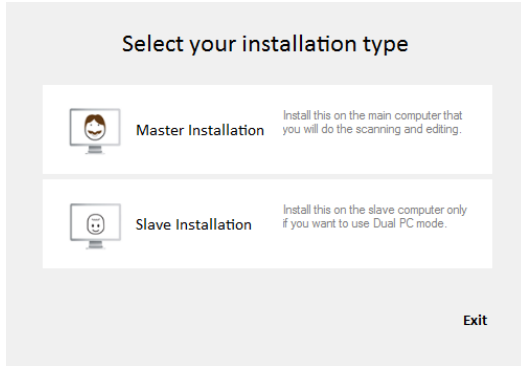
The software that you have to install is based on the mode that you want to run.

- For Single PC mode, install BookDrive Capture and BookDrive Editor Pro on the Master PC.
- For Dual PC mode, install BookDrive Capture and BookDrive Editor Pro on the Master PC and install Capture Slave on the Slave PC.



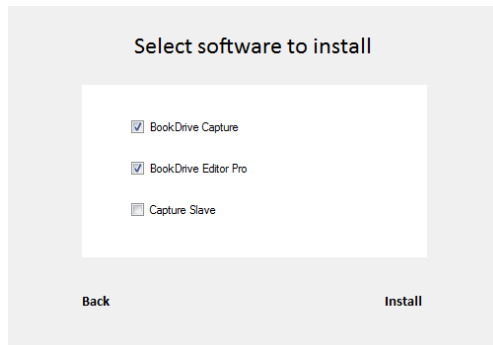
To install, close any running programs, insert the Atiz software CD into the computer's disc drive and select the appropriate mode of your installation.

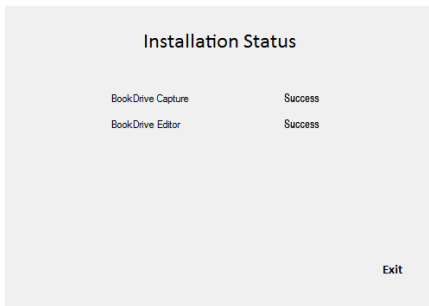
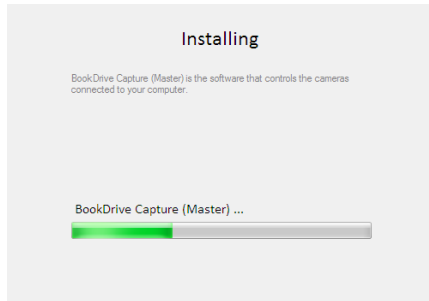
You will not find this screen if you download the software directly from Atiz website.



(If the dialog does not appear automatically, please manually go to **My Computer**. Right click on the CD-ROM icon and select **Open**. Double click **preinstall.exe**)

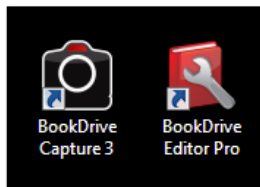
The appropriate programs will be pre-selected for installation based on the installation mode you selected.





IMPORTANT: If you are going to run Dual PC mode, do not forget to install Capture Slave on the Slave PC.

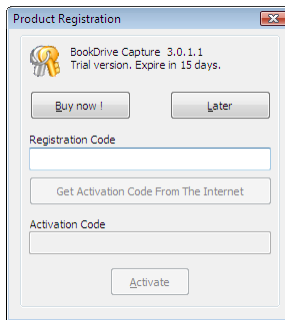
Step 4 Once finished, the shortcuts to the programs (on the Master PC, BookDrive Capture and BookDrive Editor Pro will appear on your desktop.



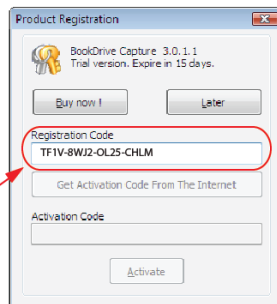
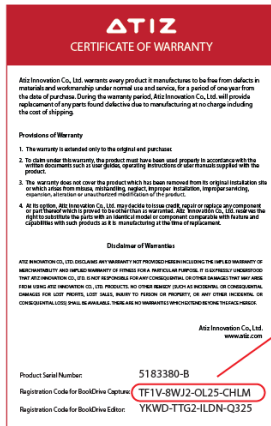
Steps to activate the software

Next step is to separately activate the BookDrive Capture and BookDrive Editor Pro software. Without activation, the program will be in trial mode and expire in 15 days.

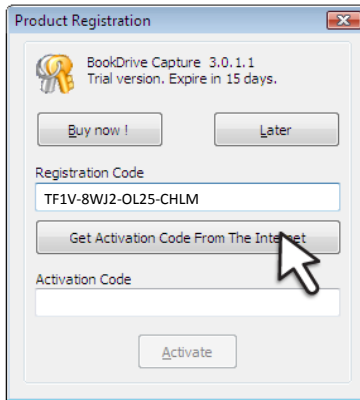
Step 1 To activate BookDrive Capture, open the program. You will see the Product Registration dialog.



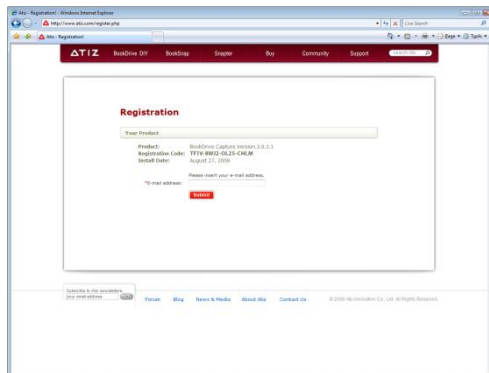
Step 2 Please locate your Registration Code for BookDrive Capture in the Warranty Card and fill it in the dialog.



Step 3 Click **Get Activation Code from the Internet**

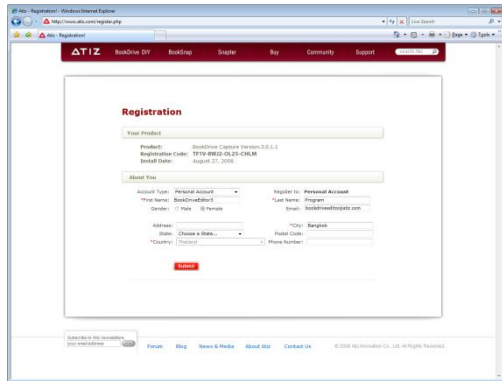


Step 4 You will be redirected to an Atiz web page. Please fill in your information and click **Submit**.



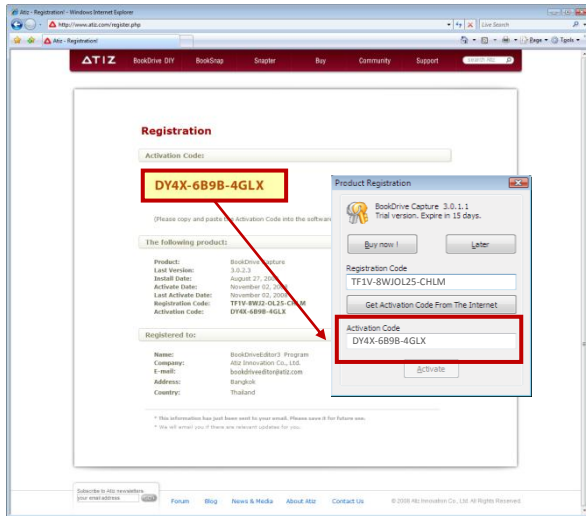
Atiz will use this info to contact you in the future when software upgrades are available.

Step 5 If the Registration Code is correct, the page will give you the Activation Code.

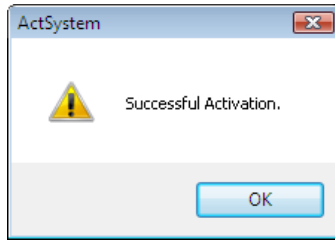


(Please contact support@atiz.com if the page does not give you the Activation Code or if you have other activation problems.)

Step 6 Copy that Activation Code and paste it on the Registration window.

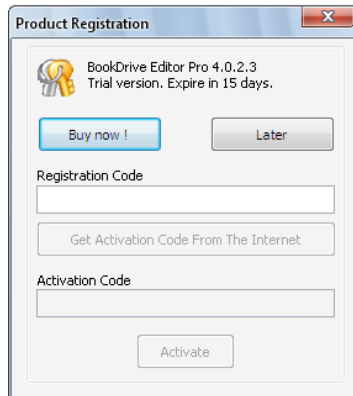
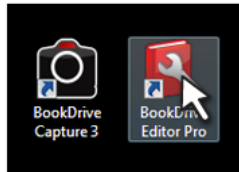


Step 7 Click **Activate** and the program will activate successfully.



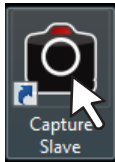
(Please contact support@atiz.com if the activation is not successful.)

Step 8 Now you are done with the activation of BookDrive Capture. Repeat step 1-7 to activate BookDrive Editor Pro.

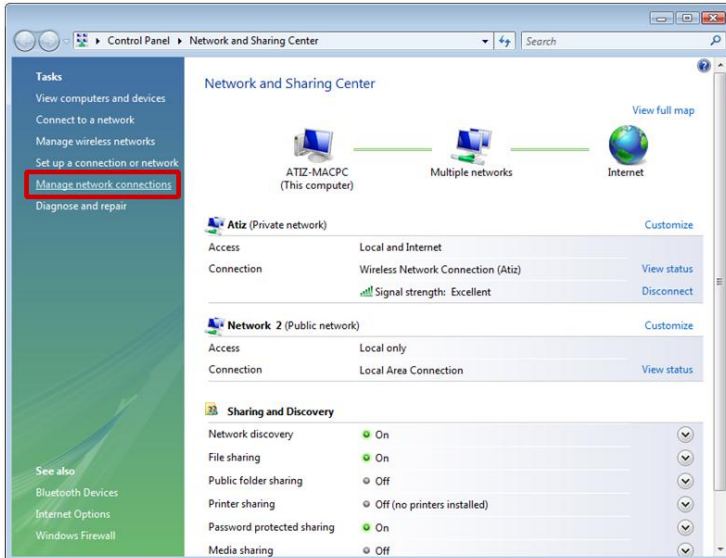


Setting up for Dual PC mode for the first time

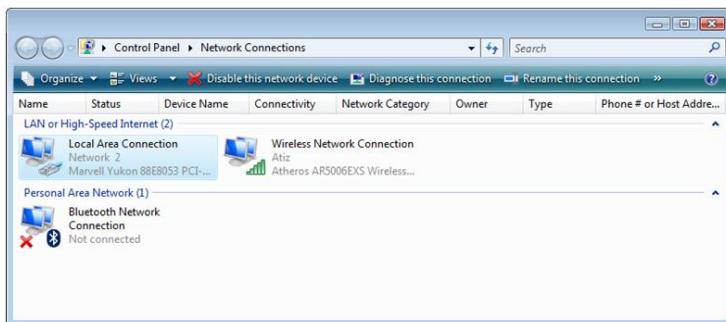
1. Open Capture Slave on the Slave PC.



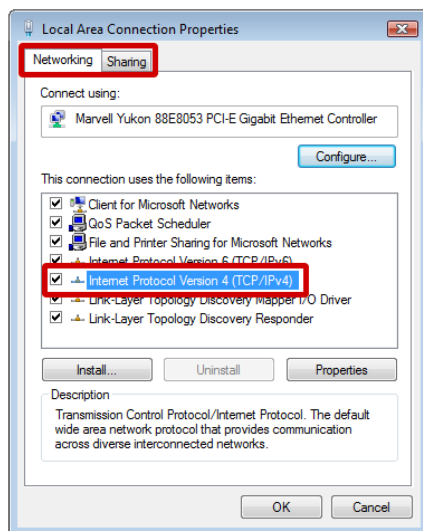
2. First, we need to do a network setting at the Slave PC.
For Vista -- **Start / Control Panel / Network and Sharing Center**
3. Select Manage network connections



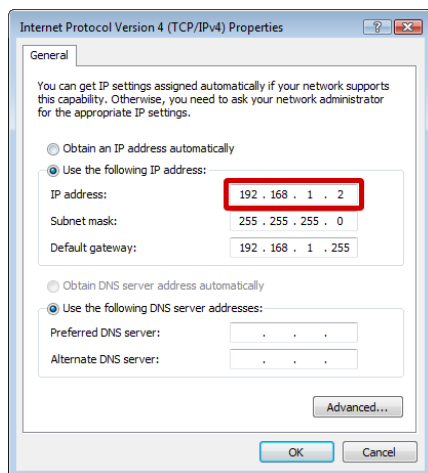
4. Right click at the Local Area Connection and select Properties



5. Select Internet Protocol Version 4 (TCP/IP) and click Properties

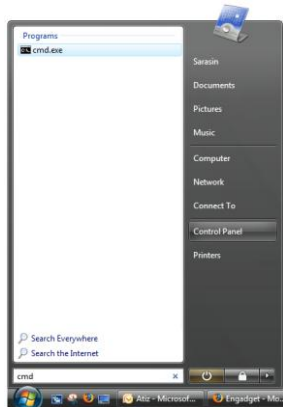


6. Select Use the following IP address: and fill in the number 192.168.1.2

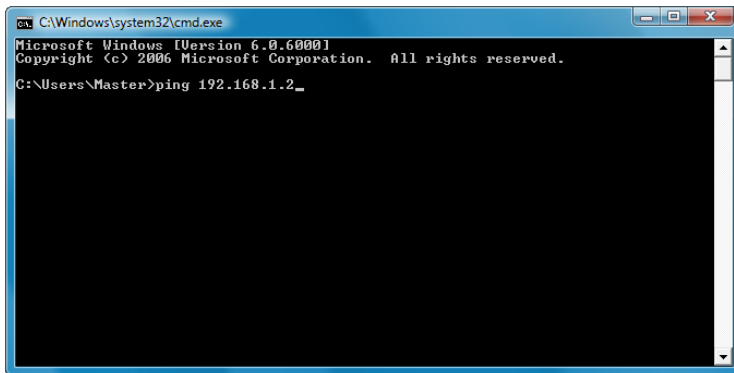


7. At this point, the setting at the Slave PC is done. You can proceed to do a set upon the Master PC.
8. You can now use the peripherals from the slave PC to use with the Master PC. You may need 2 computers. But only 1 set of monitor, keyboard and mouse is enough.
9. It's time to configure network settings on the Master PC. The procedure is similar to what you just did on the Slave PC. But this time, instead of setting the IP value as 192.168.1.2 as you did in the Slave PC, on Master PC, it has to be 192.168.1.1
10. Now on the Master PC, let's check if the Master PC can communicate with the Slave PC properly.

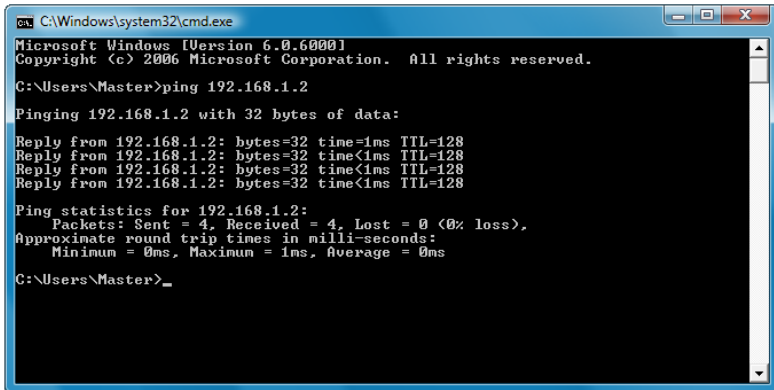
11. Click **Start**, type **cmd** and Enter



12. Type ping 192.168.1.2



13. If the communication is a success, you will get a reply like this:



```
CAWindows\system32\cmd.exe
Microsoft Windows [Version 6.0.6000]
Copyright (c) 2006 Microsoft Corporation. All rights reserved.

C:\Users\Master>ping 192.168.1.2

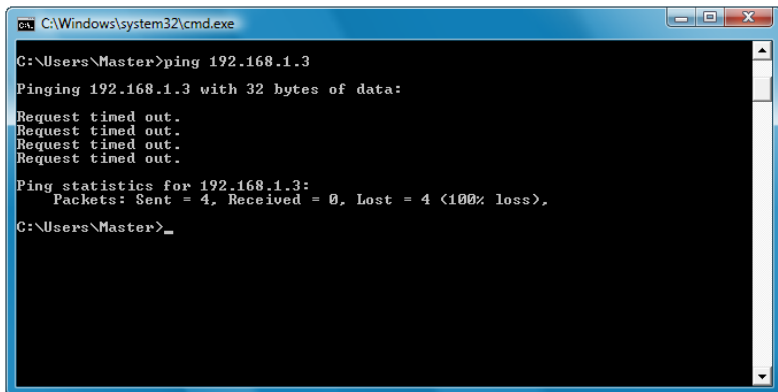
Pinging 192.168.1.2 with 32 bytes of data:

Reply from 192.168.1.2: bytes=32 time=1ms TTL=128
Reply from 192.168.1.2: bytes=32 time<1ms TTL=128
Reply from 192.168.1.2: bytes=32 time<1ms TTL=128
Reply from 192.168.1.2: bytes=32 time<1ms TTL=128

Ping statistics for 192.168.1.2:
    Packets: Sent = 4, Received = 4, Lost = 0 (0% loss),
    Approximate round trip times in milli-seconds:
        Minimum = 0ms, Maximum = 1ms, Average = 0ms

C:\Users\Master>_
```

If the communication attempt is not successful, it will show **Request timed out**:



```
C:\Windows\system32\cmd.exe

C:\Users\Master>ping 192.168.1.3

Pinging 192.168.1.3 with 32 bytes of data:

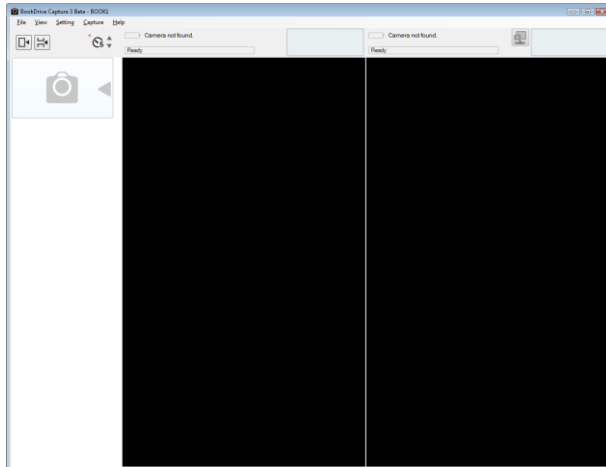
Request timed out.
Request timed out.
Request timed out.
Request timed out.

Ping statistics for 192.168.1.3:
    Packets: Sent = 4, Received = 0, Lost = 4 (100% loss),

C:\Users\Master>_
```

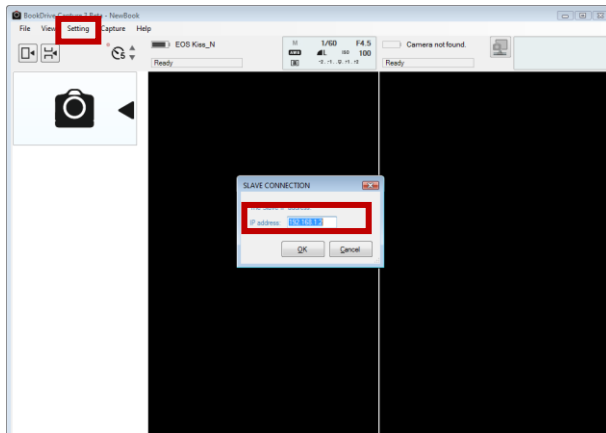
14. After you have installed the BDC Master and have checked that the communication with the Slave PC is successful, now you are ready to do a simultaneous shooting.

Open the BookDrive Capture program on the Master PC.

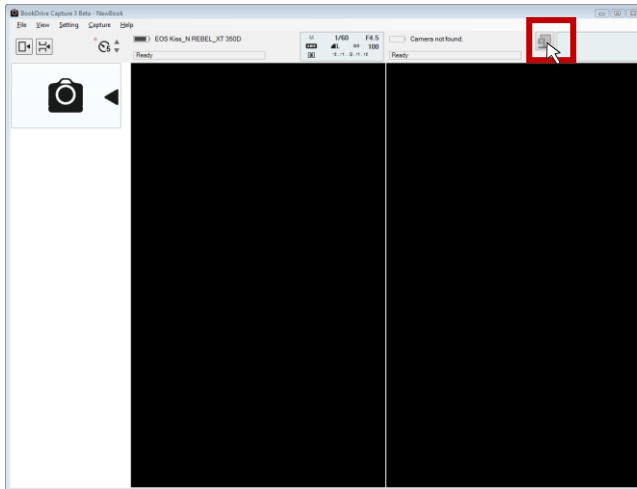


15. Click **Tools** and **Settings**

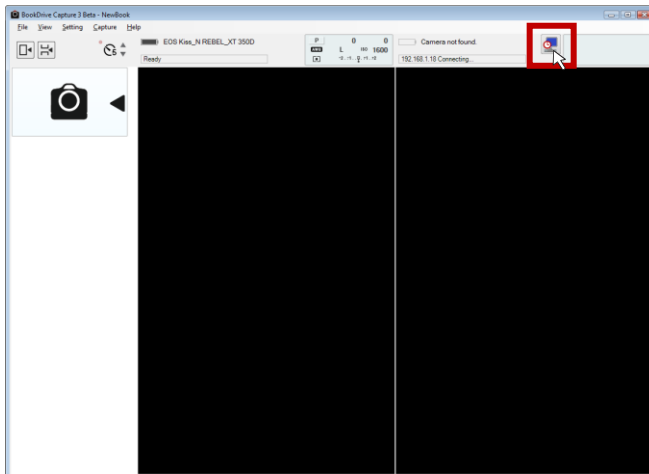
Select **Use the following address** and fill in **192.168.1.2** and **OK**



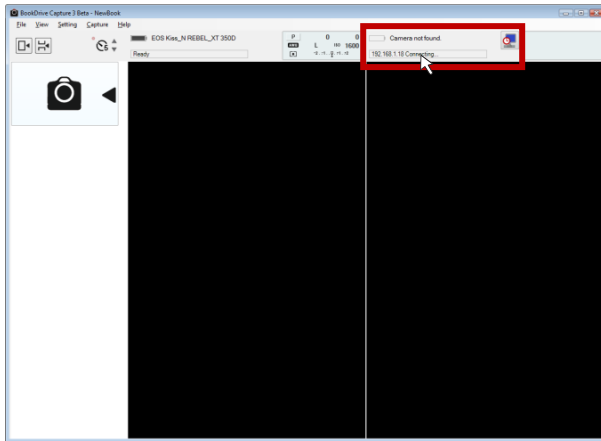
16. Click the networked camera icon



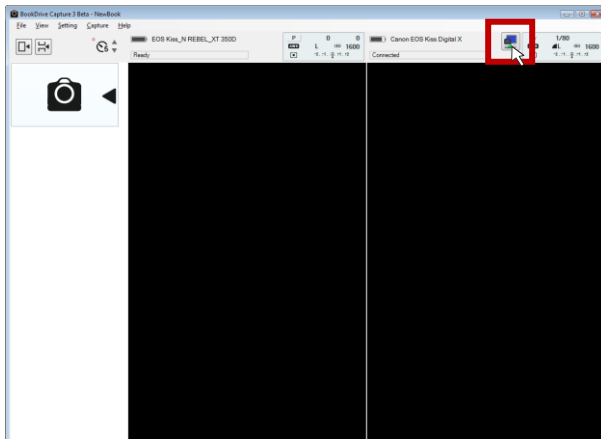
17. BookDrive Capture on the Master PC will attempt to connect with Capture Slave on the Slave PC.



Once the network communication is successful, it will show **Connected**.



18. Connect the camera on the right (pointing toward the left page) to the Master PC, and connect the camera on the left (pointing toward the right page) to the Slave PC. Turn on both cameras.
19. BookDrive Capture should be able to detect both cameras as shown here.



20. Click the Capture button to fire up shooting!

