

2

Set up software.

www.atiz.com/support/pro

Set up Software

How to set up the software

BookDrive Mini comes with 2 applications.

1. BookDrive Capture – for controlling the cameras and capturing the images
2. BookDrive Editor Pro – for image processing and making e-books

Requirements

- BookDrive Capture from version 3 up works with both Windows XP and Windows Vista (32 bit system only).
- BookDrive Editor Pro from version 4 up works with both Windows XP and Vista (32 bit system only).
- CPU – Pentium 3 1 GHz or better
- RAM – Minimum 512MB (2GB is highly recommended).
- Interface – USB 2.0 Hi-speed
- Driver – drivers for Canon camera must have been installed
- Monitor – 1024 x 768 resolution or better.

BookDrive Capture 3 has two modes for operation: Single PC and Dual PC modes.

Single PC mode

The Single PC mode allows a sequential shooting (one camera shooting at a time), resulting in maximum capture speed of 500-700 pages an hour.

Dual PC mode

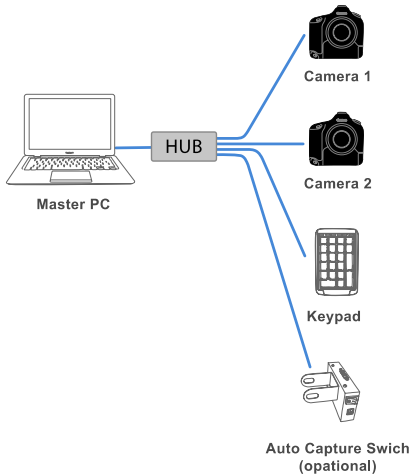
To make 2 cameras capture at the same time thus reducing waiting time, it requires 2 PCs, each connecting to one camera. Both PCs are connected together via a LAN network. This mode is recommended only for advanced users.

Set up Software

The following picture summarizes the key differences of Single PC mode VS. Dual PC Mode

Single PC mode

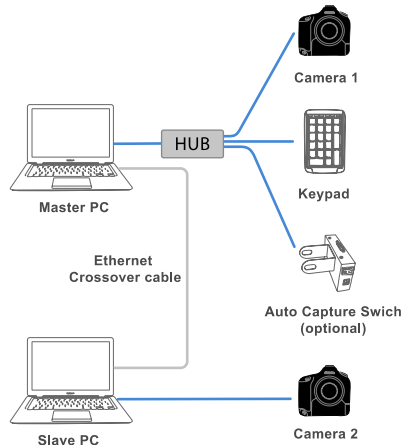
- Windows XP only
- 1 PC, simple set-up
- Sequential shooting
(max speed \approx 500 pgs/hr.)
- Cannot change camera settings within the software



Dual PC mode

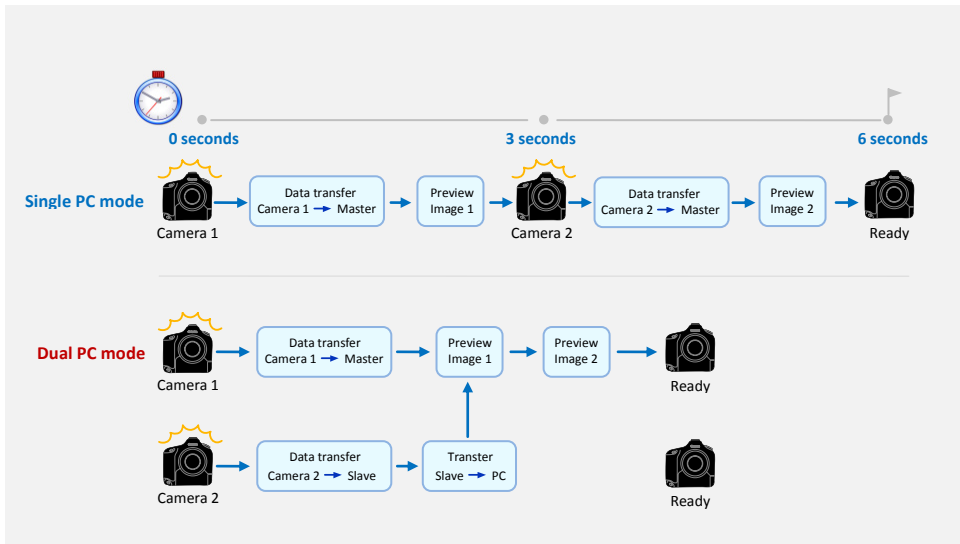
- Windows XP and Vista
- 2 PCs, more advanced set-up
- Simultaneous shooting
(max speed \approx 900 pgs/hr.)
- Can change camera settings within the software

V.S



Set up Software

Workflow comparison



Set up Software

Installing the Software

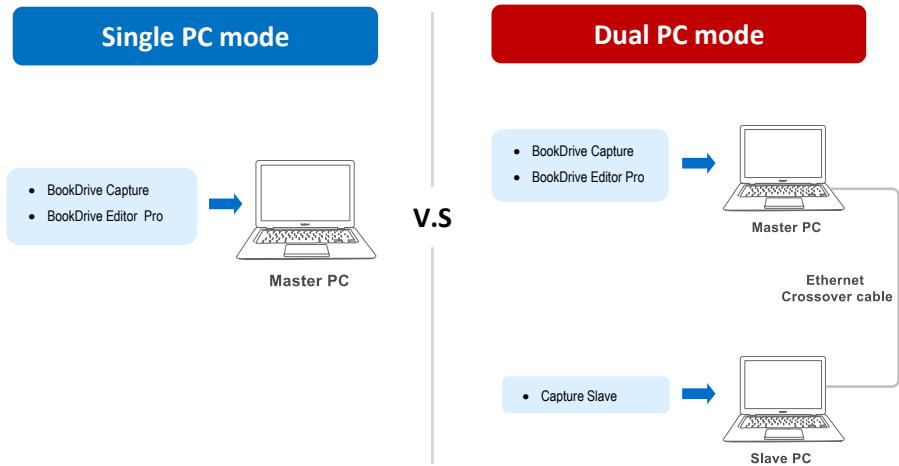
Step 1 Make sure you've successfully installed Canon drivers and software that come with the cameras. Do not proceed to next step if you still can't do PC remote shooting using the Canon software.



(The actual screenshot of Canon software may differ from what's shown here)

Set up Software

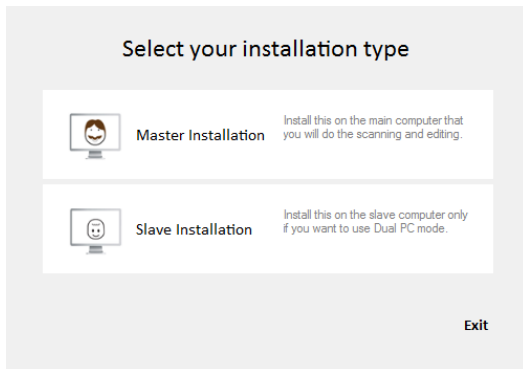
- Step 2** The software that you have to install is based on the mode that you want to run.
- For Single PC mode, install BookDrive Capture and BookDrive Editor Pro on the Master PC.
 - For Dual PC mode, install BookDrive Capture and BookDrive Editor Pro on the Master PC and install Capture Slave on the Slave PC.



Set up Software

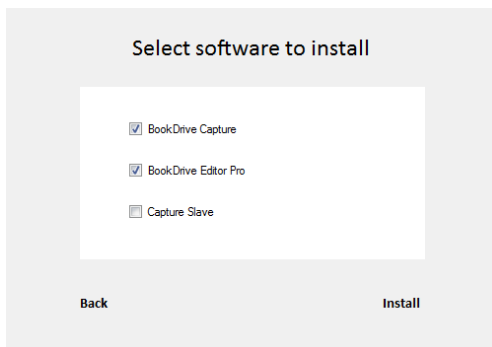
To install, close any running programs, insert the Atiz software CD into the computer's disc drive and select the appropriate mode of your installation.

You will not find this screen if you download the software directly from Atiz website.

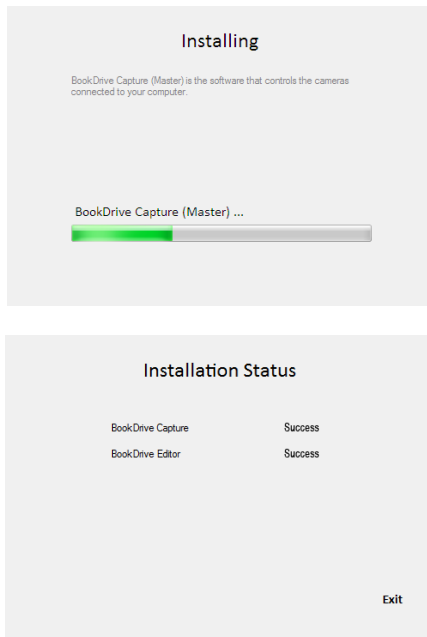


(If the dialog does not appear automatically, please manually go to **My Computer**. Right click on the CD-ROM icon and select **Open**. Double click **preinstall.exe**)

The appropriate programs will be pre-selected for installation based on the installation mode you selected.

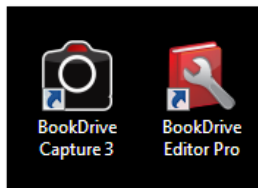


Set up Software



IMPORTANT: If you are going to run Dual PC mode, do not forget to install Capture Slave on the Slave PC.

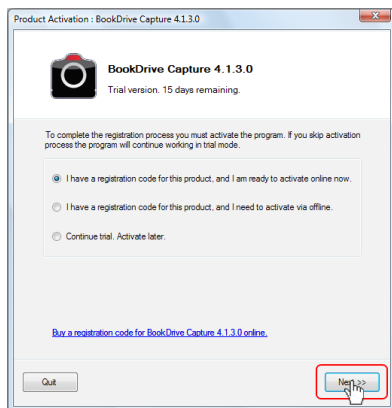
Step 4 Once finished, the shortcuts to the programs (on the Master PC, BookDrive Capture and BookDrive Editor Pro will appear on your desktop.



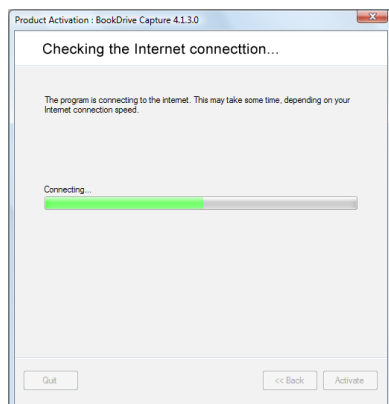
Activating the software

1. When you open the program for the first time, you will see the activation window. The program will allow 15 days of trial period without activating.

If you're ready to activate the program, click **Next**.

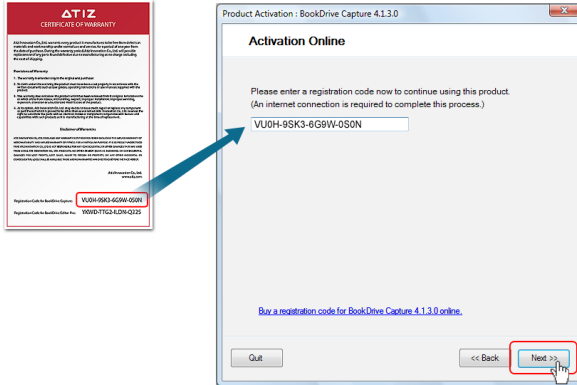


2. Activation is done over the Internet. The program will check if you have the Internet connection.



Activating the software

3. Fill in the registration code in the box. You can find your registration code in the Warranty Card. Click **Next**



4. If the registration code is correct, the program will ask for your information. We need this information to contact you in the future when there are relevant updates. Please fill in your information and click **Activate**.

The image shows a dialog box titled 'Product Activation : BookDrive Capture 4.1.3.0' with the sub-header 'Registration code is correct.'. The dialog asks the user to 'Please enter your information to complete the process.' and includes a checkbox labeled 'I have information on atiz site.'. Below this are several text input fields for 'Email Address', 'First Name', 'Last Name', 'Address', 'City', 'State/Province', 'Country', 'Postal Code', 'Phone Number', 'Company', and 'Position'. There is also a 'Get Information' button next to the 'Email Address' field. At the bottom of the dialog are three buttons: 'Quit', '<< Back', and 'Activate'.

Activating the software

Product Activation : BookDrive Capture 4.1.3.0

Registration code is correct.

Please enter your information to complete the process.

I have information on atiz site.

Get Information

Email Address: palachol@atiz.com

First Name: Palachol

Last Name: Saosimma

Address: 729/106 Ratchadaphisek-Sathuprdit

City: Yannawa

State/Province: Bangkok

Country: Thailand

Postal Code: 10120

Phone Number: +66026836600

Company: Atiz innovation Co., Ltd.

Position: Graphic Designer

Quit << Back Activate

5. The activation is now successful. You are ready to use the program.

Product Activation : BookDrive Capture 4.1.3.0

Activation successful

You have successfully activated the BookDrive Capture 4.1.3.0 on this computer.

It's now ready to use. You may exit this window.

Done

How to activate offline?

In case you don't have Internet connection, you will need to activate via offline process. Here are the steps:

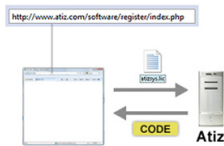


1. Copy the file "atizsys.lic" onto a flash drive. This file can be found on C:\Program files\Atiz\BookDrive Capture3\atizsys.lic

or
BookDrive Editor Pro



2. Copy from the flash drive onto another PC that's connected to the Internet.



3. Open a web browser. Go to <http://www.atiz.com/software/register> Upload the file and submit. Atiz web will generate the activation code on the page. Please write it down on paper.

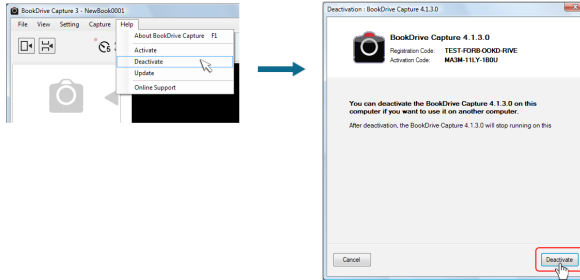


4. Use that code and fill in the activation code dialog box on the installed PC. Click **Activate**.

How to move the software to another computer?

The license only allows you to install the program on only 1 computer at a time.

But we allow you to move the software from an old computer to a new computer. Here are the steps:

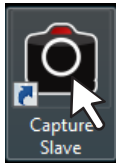


1. First, you have to deactivate the software on the old computer. Open the program that you want to deactivate, Click Menu / Help / Deactivate
2. You will see the deactivation window. Click **Deactivate**.
3. The deactivation process is complete.
4. Install the program on the new computer. You have to go through the activation process again (as if you're activating the program for the first time) to obtain the new activation code for use on the new computer.

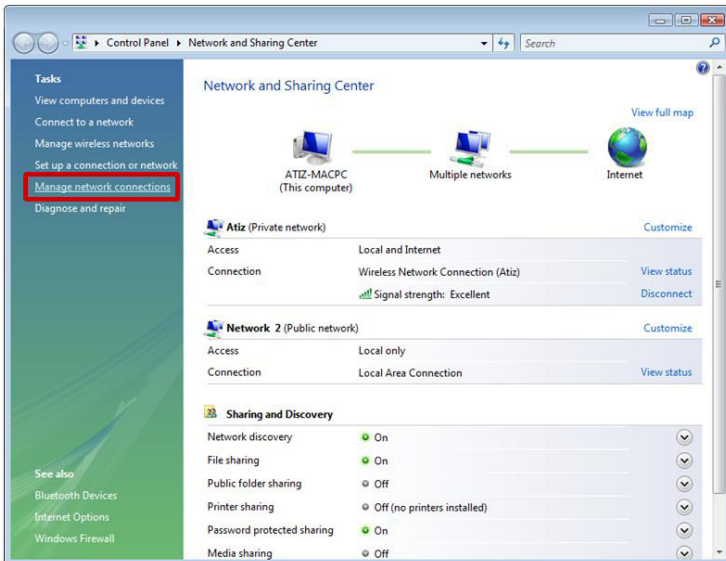
Set up Software

Setting up for Dual PC mode for the first time

1. Open Capture Slave on the Slave PC.

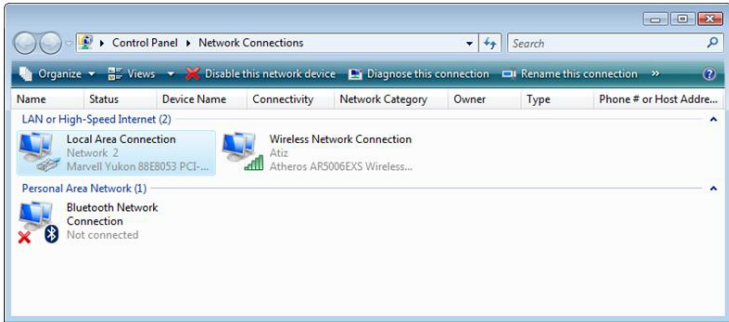


2. First, we need to do a network setting at the Slave PC.
For Vista -- **Start / Control Panel / Network and Sharing Center**
3. Select Manage network connections

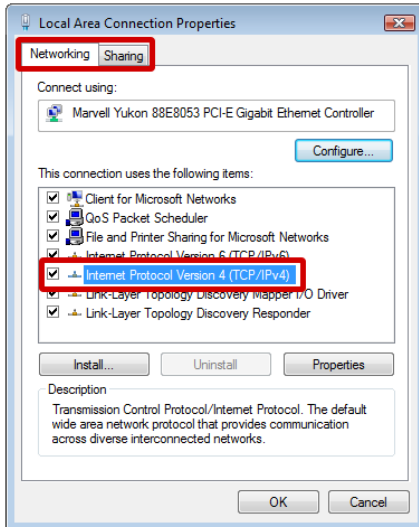


Set up Software

4. Right click at the Local Area Connection and select Properties

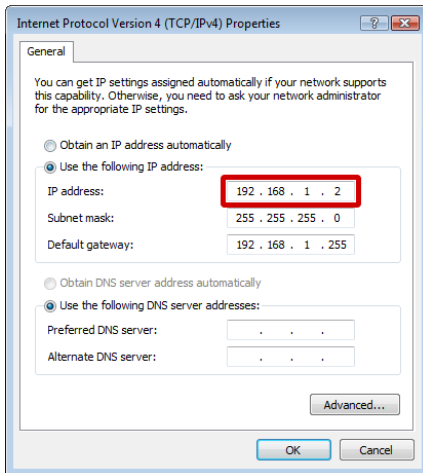


5. Select **Internet Protocol Version 4 (TCP/IP)** and click **Properties**



Set up Software

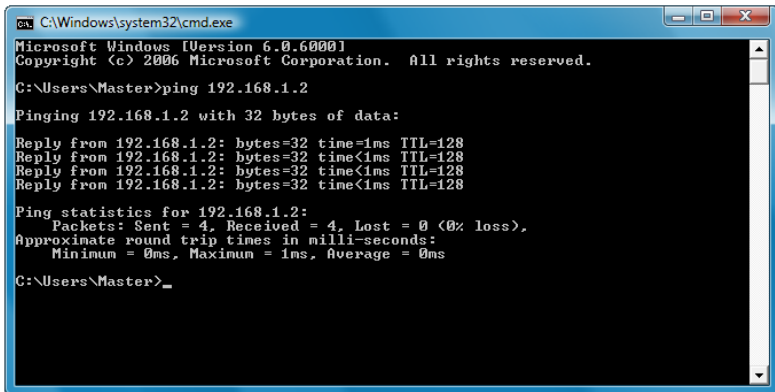
6. Select Use the following IP address: and fill in the number 192.168.1.2



7. At this point, the setting at the Slave PC is done. You can proceed to do a set upon the Master PC.
8. You can now use the peripherals from the slave PC to use with the Master PC. You may need 2 computers. But only 1 set of monitor, keyboard and mouse is enough.
9. It's time to configure network settings on the Master PC. The procedure is similar to what you just did on the Slave PC. But this time, instead of setting the IP value as 192.168.1.2 as you did in the Slave PC, on Master PC, it has to be 192.168.1.1
10. Now on the Master PC, let's check if the Master PC can communicate with the Slave PC properly.

Set up Software

13. If the communication is a success, you will get a reply like this:



```
C:\Windows\system32\cmd.exe
Microsoft Windows [Version 6.0.6000]
Copyright (c) 2006 Microsoft Corporation. All rights reserved.

C:\Users\Master>ping 192.168.1.2

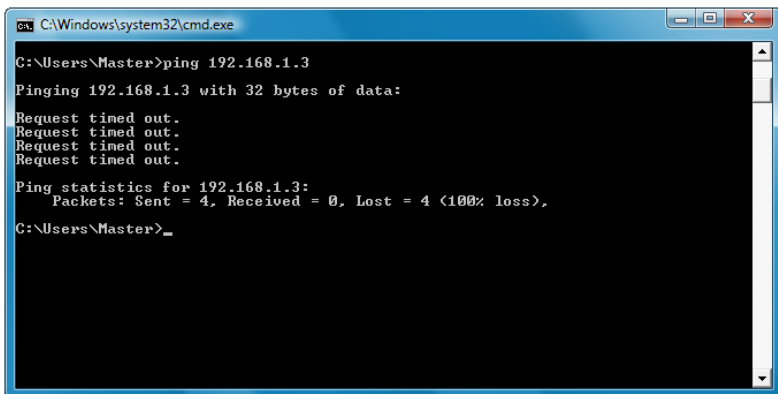
Pinging 192.168.1.2 with 32 bytes of data:

Reply from 192.168.1.2: bytes=32 time=1ms TTL=128
Reply from 192.168.1.2: bytes=32 time<1ms TTL=128
Reply from 192.168.1.2: bytes=32 time<1ms TTL=128
Reply from 192.168.1.2: bytes=32 time<1ms TTL=128

Ping statistics for 192.168.1.2:
    Packets: Sent = 4, Received = 4, Lost = 0 (0% loss),
    Approximate round trip times in milli-seconds:
        Minimum = 0ms, Maximum = 1ms, Average = 0ms

C:\Users\Master>_
```

If the communication attempt is not successful, it will show **Request timed out**:



```
C:\Windows\system32\cmd.exe

C:\Users\Master>ping 192.168.1.3

Pinging 192.168.1.3 with 32 bytes of data:

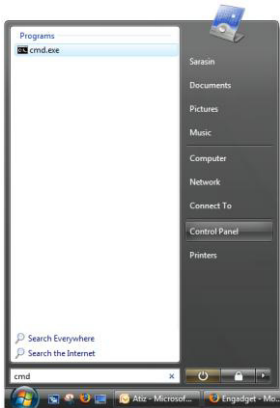
Request timed out.
Request timed out.
Request timed out.
Request timed out.

Ping statistics for 192.168.1.3:
    Packets: Sent = 4, Received = 0, Lost = 4 (100% loss),

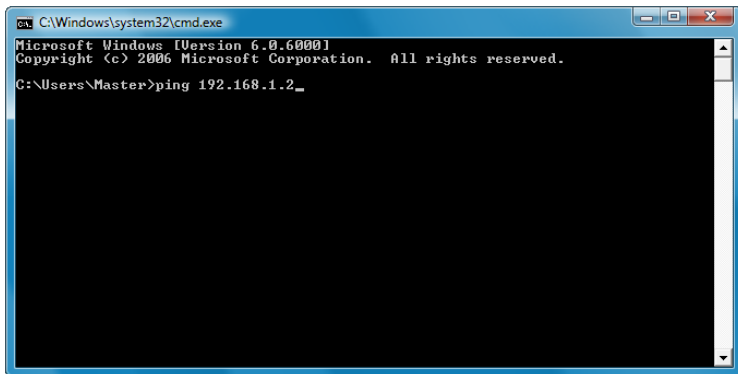
C:\Users\Master>_
```

Set up Software

11. Click **Start**, type **cmd** and Enter



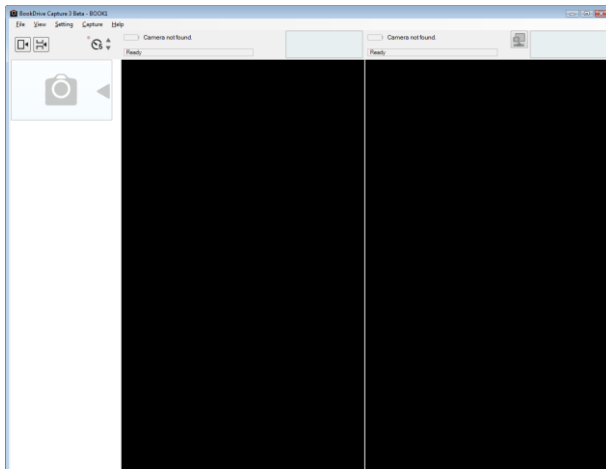
12. Type **ping 192.168.1.2**



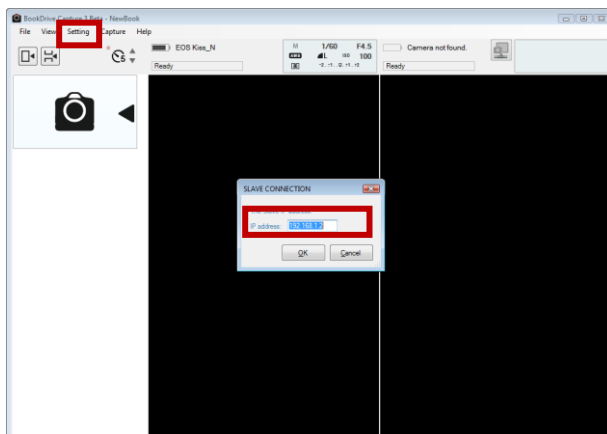
Set up Software

14. After you have installed the BDC Master and have checked that the communication with the Slave PC is successful, now you are ready to do a simultaneous shooting.

Open the BookDrive Capture program on the Master PC.

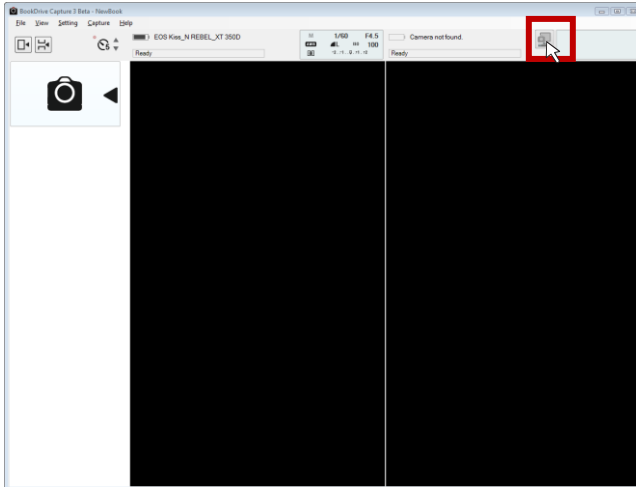


15. Click **Tools** and **Settings**
Select **Use the following address** and fill in **192.168.1.2** and **OK**

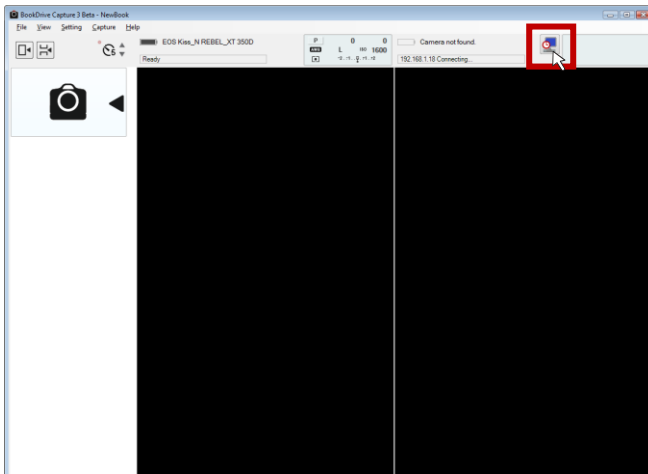


Set up Software

16. Click the networked camera icon

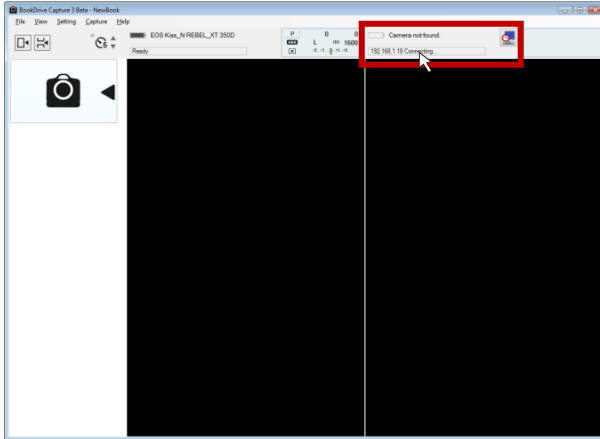


17. BookDrive Capture on the Master PC will attempt to connect with Capture Slave on the Slave PC.

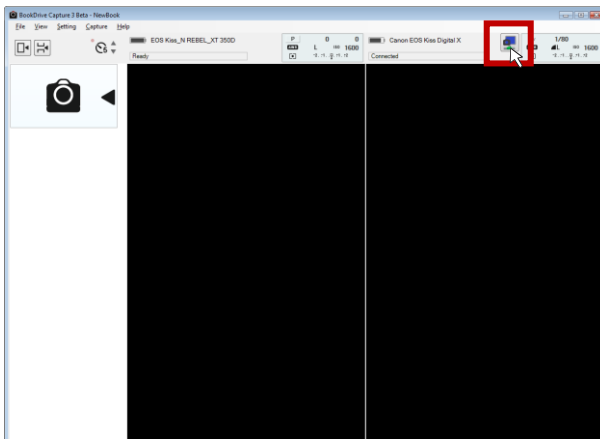


Set up Software

Once the network communication is successful, it will show **Connected**.



18. Connect the camera on the right (pointing toward the left page) to the Master PC, and connect the camera on the left (pointing toward the right page) to the Slave PC. Turn on both cameras.
19. BookDrive Capture should be able to detect both cameras as shown here.



Set up Software

20. Click the Capture button to fire up shooting!

