

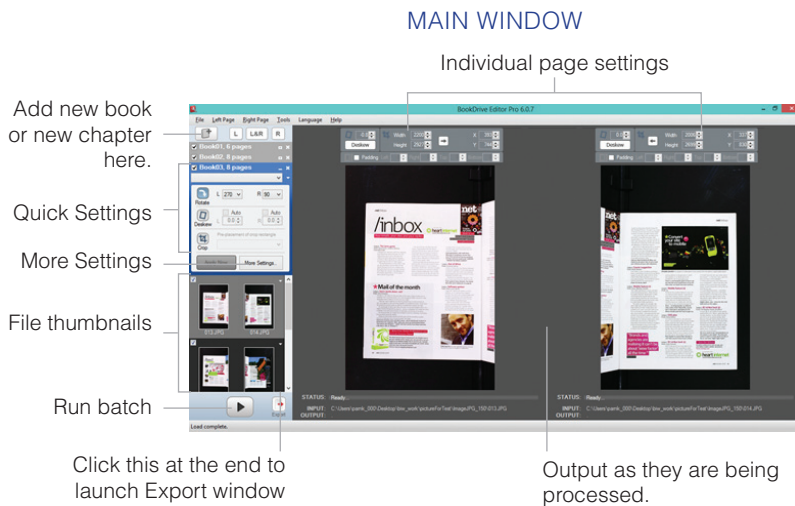
EDIT

user guide

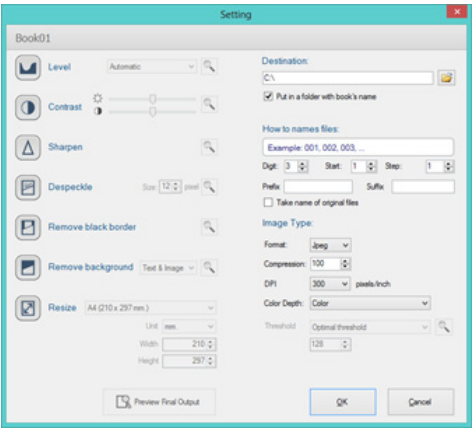
ΔTIZ

THE BASICS

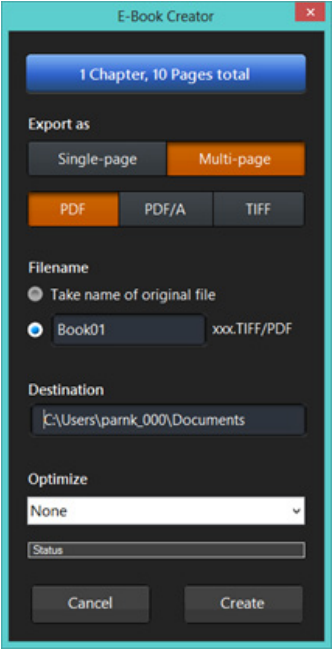
Let us introduce you to the BookDrive Editor Pro software. It is for post-processing to further enhance the scanned images into final output for distribution or archiving.



MORE SETTINGS WINDOW



EXPORT WINDOW

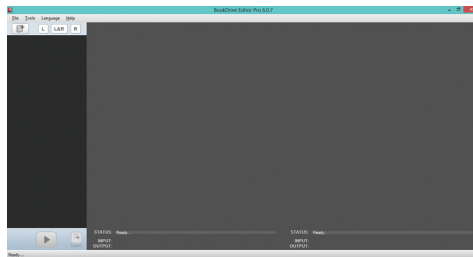


5 SIMPLE STEPS

To edit a book, there are 5 key steps to make:

- 1 Import files
- 2 Select “**Quick Settings**”
- 3 Click “**Apply Now**”
- 4 Run batch
- 5 Export

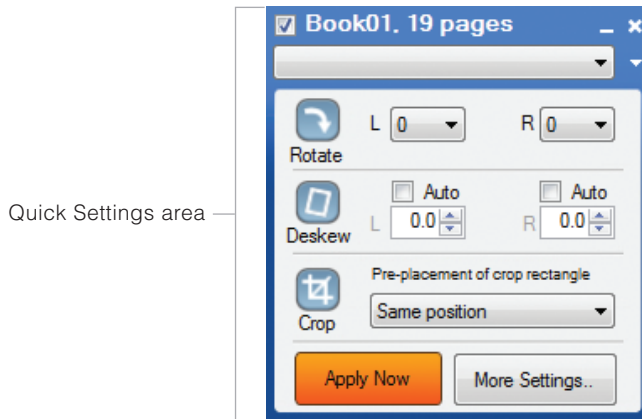
After you’ve finished scanning in BookDrive Capture, exit it and launch BookDrive Editor Pro.



- 1 To import files click **L&R** to add both left and right pages.

- Click **L** or **R** if you want to add only the left or right pages

- 2 Select **Quick Settings**. (see page 7 for more details)



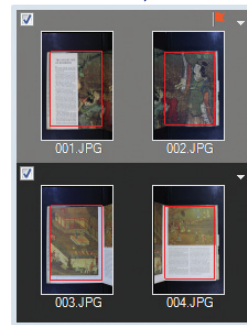
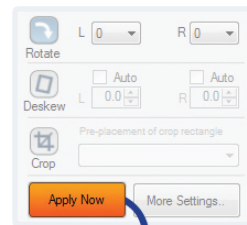
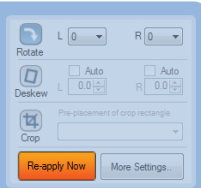
There are more image operations that you can perform.


If you want, click **More Settings..** (see page 11 for more details).

- 3  Click "**Apply Now**"

As you click "**Apply Now**" button, all the quick settings that you just made (rotate, deskew, crop) will be applied onto these pages below.

After finish operations, user must use **Re-apply Now** to apply setting and see output thumbnails.



- 4  Click "**Run batch**" to process all the files.
The output will be single-page files (one file per one page).

- 5  Click "**Export**"
If you want output as multi-page files (all pages in on either in TIFF or PDF, click "Export")

(intentionally left blank)

QUICK SETTINGS

Let's explain more what **Quick Settings** really entail.

Begin with the first chapter of the book. Click **File / New Book** or



Import file

- To select all files in that folder → press **Ctrl+A**.
- To select some files in that folder → hold **Ctrl** while you click to select the files you want.

How images are sorted and put in an order?

The software will auto-sort the selected images based on their filename in an ascending order.

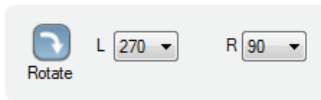
By default, the program will also respect the __L, __R suffix in the filename and treat them as left page and right page properly.

If no __L, __R suffix available, the program by default will treat the beginning page (lowest value) as left page.



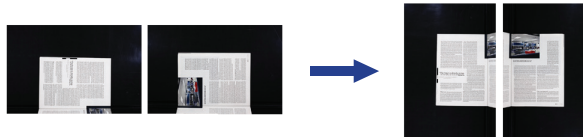
The files are now added to the queue. (You can add as many chapters and books to the queue as you'd like by following the same steps.)

Rotate

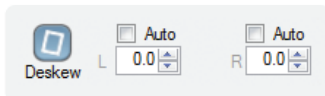


By default, the files should already have a correct orientation thanks to the Instant Rotate feature in BookDrive Capture, which in that case, you can just disable this operation.

But if your images look like below, rotate left image by 270 degrees and right image by 90 degrees clockwise.



Deskew



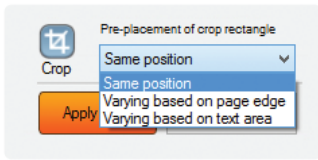
For finer orientation adjustment, you'll want to use the deskew feature which can rotate the image by as little as 0.1 degree.

You can choose to deskew images auto or manually.

To auto deskew all pages, select checkbox.



Crop



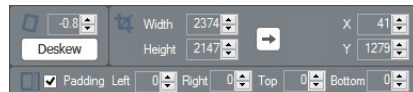
Get rid of the unwanted area of the image by cropping.

Crop process has 3 modes for different purpose. Each mode pre-places the crop rectangle differently.

1. Same position on every page
2. Varying on each page based on page edge
3. Varying on edge page based on text area

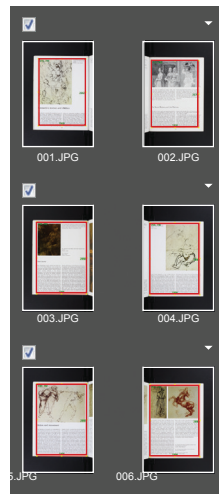
The program only pre-places the crop rectangle, but you can review, and change the crop location and size of every page to fit perfectly at the Individual Page Settings.

INDIVIDUAL PAGE SETTINGS



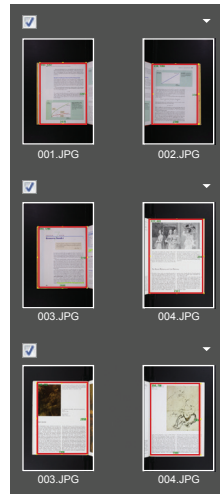
1. Same position

- The first pair of pages determines the rest.
- Adjust location and size of the crop rectangle on the first pair and it will reflect to all other pages.
- Output will have same page size. Good if the book was not moved during the scanning and the scanning was done carefully.



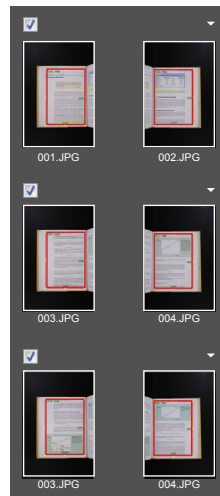
2. Varying based on page edge

- Page-by-page auto detection and placement of crop rectangle at where the page edge is.
- Output will have varied size. Location of crop rectangle is varied.
- Good to use with book that has different page size, or if book was moved a lot during the scanning.



3. Varying based on text area

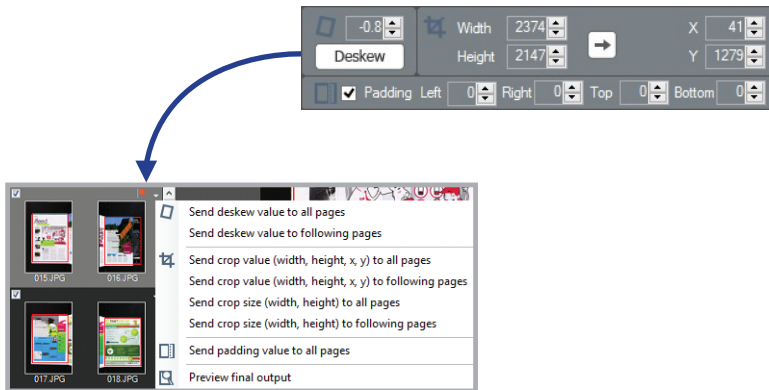
- Page-by-page auto detection and placement of crop rectangle at the text area.
- The crop size will be fit with only the text area. You need to add padding to the page so that the output looks natural.
- Good if you want the text location and margin to be identical on every page.





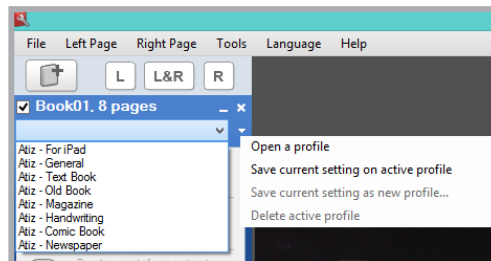
Once you've made individual page settings to a pair, there will appear a red flag on top right of that pair to indicate that such pair contains different settings from the rest. You can choose to send the unique settings of that pair to all pages or only the following pages.

INDIVIDUAL PAGE SETTINGS



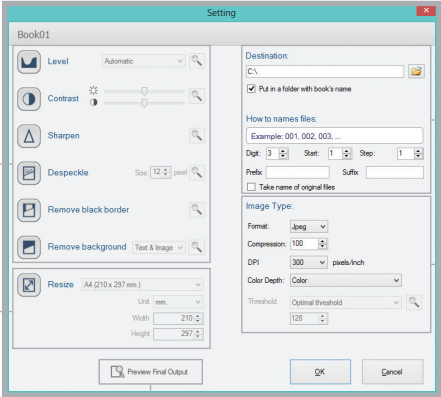
Profile

The program comes with various default profiles to help you get started.



(intentionally left blank)

MORE SETTINGS



The 'Setting' dialog box for 'Book01' contains the following sections:

- Image Enhancement:** Includes 'Level' (Automatic), 'Contrast' (slider), 'Sharpen' (slider), 'Despeckle' (Size: 12), 'Remove black border', and 'Remove background' (Text & Image).
- Destination:** 'C:\' with a checkbox 'Put in a folder with book's name'.
- How to names files:** 'Example: 001_002_003...' with fields for 'Dpt', 'Start', 'Step', 'Prefix', and 'Suffix'. A checkbox 'Take name of original files' is also present.
- Image Type:** 'Format: .jpg', 'Compression: 100', 'DPI: 300 pixels/inch', 'Color Depth: Color', 'Threshold: 128', and 'Optional threshold'.
- Resize option:** 'A4 (210 x 297 mm)' with 'Unit: mm', 'Width: 210', and 'Height: 297'.
- Buttons:** 'Preview Final Output', 'OK', and 'Cancel'.

Annotations on the right side of the dialog:

- 'How to save files' points to the 'Destination' and 'How to names files' sections.
- 'image type' points to the 'Image Type' section.
- 'Click this to see the final output' points to the 'Preview Final Output' button.

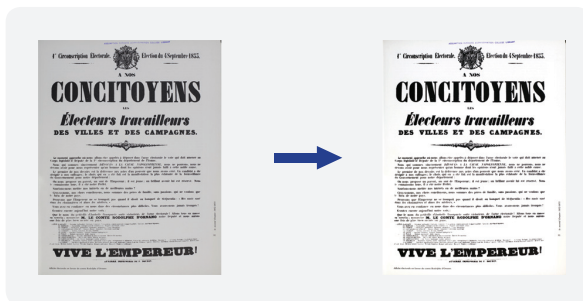
Annotation on the left side:

- 'Image Enhancement' points to the 'Level', 'Contrast', 'Sharpen', 'Despeckle', 'Remove black border', and 'Remove background' options.
- 'Resize option' points to the 'Resize' section.

Level



Auto level makes black blacker and white whiter



Contrast



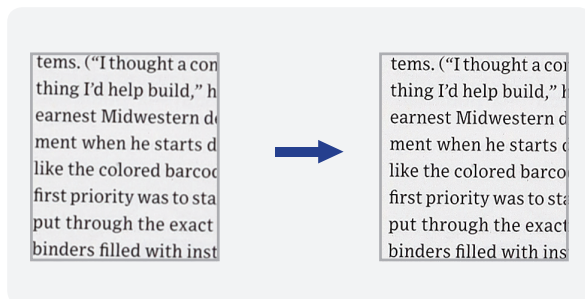
Adjust contrast of image by changing luminance and the difference between dark and bright area.



Sharpen



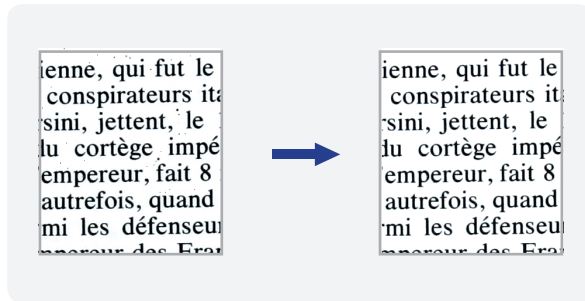
The process to enhance the image by increasing/decreasing the sharpness of edge. This process can eliminate blurred edge on image.



Despeckle



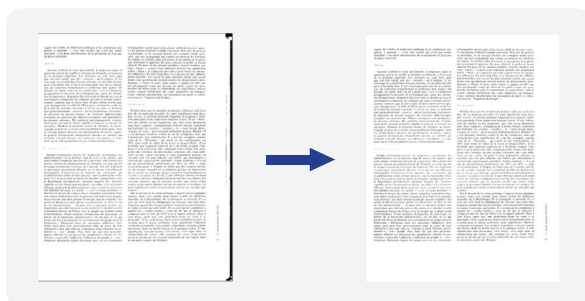
Despeckle is dust and noise cleanup. User can vary size of dust by defining the size of dust in pixel unit.



Remove black border



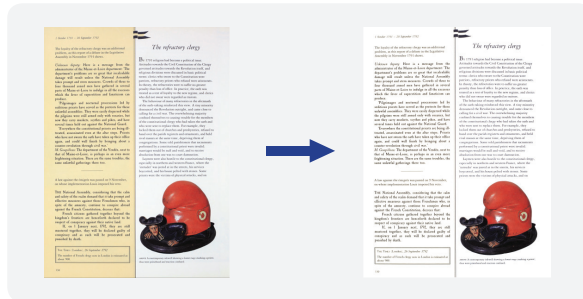
Remove black border around the page and replace border color with white.



Remove background



This process tries to find the background color of the page and you can replace that background color with white or other color.



Resize



The changing of page size by selecting standard paper size or custom defined.

A4 (210 x 297 mm.)

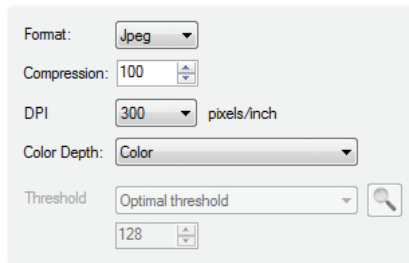
Unit mm.

Width 210

Height 297



Output selection

A screenshot of a software dialog box titled "Output selection". It contains several settings: "Format" is a dropdown menu set to "Jpeg"; "Compression" is a numeric input field set to "100"; "DPI" is a dropdown menu set to "300" with the unit "pixels/inch" to its right; "Color Depth" is a dropdown menu set to "Color"; "Threshold" is a dropdown menu set to "Optimal threshold" with a magnifying glass icon to its right. Below the "Threshold" dropdown is a numeric input field set to "128".

- The available output format options are TIFF or JPEG.
- Available compressions for TIFF are LZW, CCITT G3, CCITT G4.
- Users can also select the level of compression for JPEG format by setting its quality level.
- Resolution is where you can set DPI of the output image. You can select 100, 200, 300, 600 DPI.
- Available color options are: Black and White, Grayscale and Color.
- As for Black and White conversion, there are many types of conversions allowed. This has to do with the threshold of how a given a pixel is converted to either a black or white pixel.
 - Fixed (threshold value is set at 128)
 - User defined (users can define other threshold values)
 - Automatic (the level of optimal threshold will automatically be selected by the computer).

Highest Quality (this setting can be known as dynamic localized thresholding, which means there can be many thresholding values on a page. If selected, the program will scan the entire page and automatically adjust the thresholding values for optimal values throughout the pages. This setting will take the longest time but will provide the best quality.)

Black & White conversion

Format:

Compression:

DPI: pixels/inch

Color Depth:

Threshold:

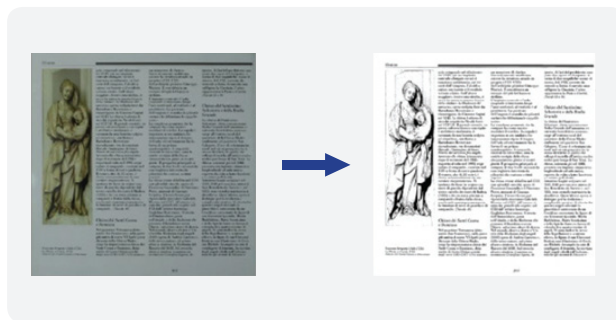
Format:

Compression:

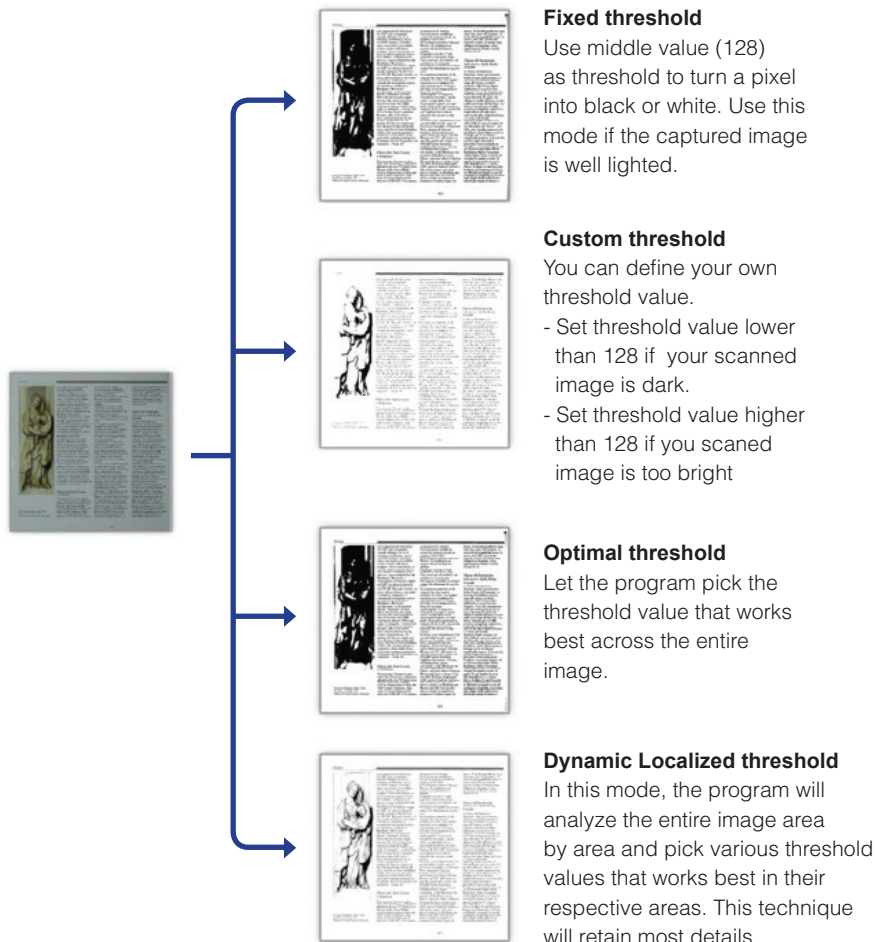
DPI: pixels/inch

Color Depth:

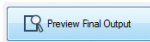
Threshold:



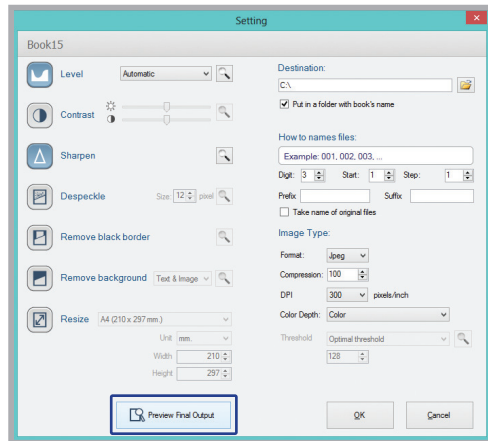
Examples of results using different thresholding techniques:



Preview Final Output



Before running the actual operation, you can see the preview of the outcome you will get by clicking **Preview Final Output** button.

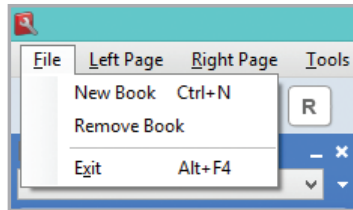


If you're not satisfied with the result in the preview, go back to make change to the settings until you get satisfactory result.

You can add another chapter or even a completely different book to the queue.



Click **File/New Book** again and repeat the the steps for the settings.



Run batch



Once all the settings have been made, it's time to run the batch image processing operations. Simply hit the **Run Batch** button.



If you want to stop, click the same button again. Once the process is complete, you should get the satisfactory output.

(intentionally left blank)

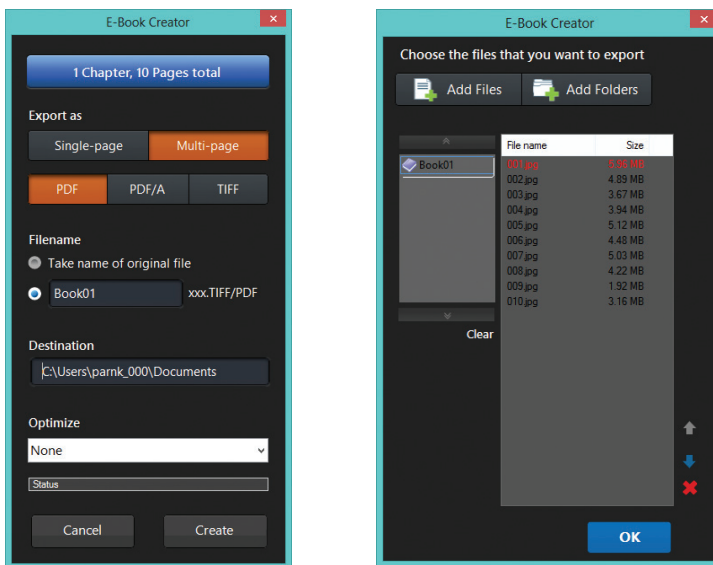
EXPORT



Creating PDFs

You can export results into PDFs or multi-page TIFF by clicking the Export button.

Once clicked, you will see this window.



Steps

- 1 Click Export button.
- 2 Select the images you want to export.
- 3 Select the output format (PDF or TIFF).
- 4 Click Create.

